

Product datasheet for **AP17546PU-N**

PRAME (C-term) Rabbit Polyclonal Antibody

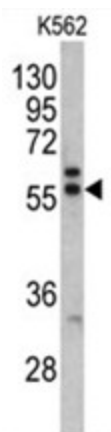
Product data:

Product Type:	Primary Antibodies
Applications:	FC, IHC, WB
Recommended Dilution:	Peptide ELISA: 1/1,000. Flow Cytometry: 1/25. Western blotting: 1/2,000. Immunohistochemistry on Paraffin Sections: 1/50-1/100.
Reactivity:	Human
Host:	Rabbit
Clonality:	Polyclonal
Immunogen:	KLH conjugated synthetic peptide between 476-502 amino acids from the C-terminal region of human MAPE.
Specificity:	This antibody reacts to MAPE.
Formulation:	PBS with 0.09% (W/V) sodium azide State: Liquid purified Ig
Concentration:	lot specific
Purification:	Saturated Ammonium Sulfate (SAS) precipitation
Conjugation:	Unconjugated
Storage:	Store the antibody undiluted at 2-8°C for one month or (in aliquots) at -20°C for longer. Avoid repeated freezing and thawing.
Stability:	Shelf life: one year from despatch.
Gene Name:	preferentially expressed antigen in melanoma
Database Link:	Entrez Gene 23532 Human P78395
Background:	MAPE is an antigen that is predominantly expressed in human melanomas and that is recognized by cytolytic T lymphocytes. It is not expressed in normal tissues, except testis. This expression pattern is similar to that of other CT antigens, such as MAGE, BAGE and GAGE. However, unlike these other CT antigens, its gene is also expressed in acute leukemias.
Synonyms:	OPA-interacting protein 4, OIP4, OIP-4



[View online »](#)

Product images:



Western blot analysis of Mrified Pab.