

Product datasheet for **AP17543PU-N**

MAML3 (C-term) Rabbit Polyclonal Antibody

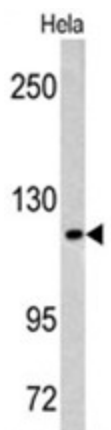
Product data:

Product Type:	Primary Antibodies
Applications:	WB
Recommended Dilution:	ELISA: 1/1,000. Western blotting: 1/50 - 1/100.
Reactivity:	Human
Host:	Rabbit
Clonality:	Polyclonal
Immunogen:	KLH conjugated synthetic peptide selected from the C-terminal region of human MAML3
Specificity:	This antibody reacts to Mastermind-like protein 3.
Formulation:	PBS with 0.09% (W/V) sodium azide State: Liquid purified Ig
Concentration:	lot specific
Purification:	Saturated Ammonium Sulfate (SAS) precipitation
Conjugation:	Unconjugated
Storage:	Store the antibody undiluted at 2-8°C for one month or (in aliquots) at -20°C for longer. Avoid repeated freezing and thawing.
Stability:	Shelf life: one year from despatch.
Gene Name:	mastermind like transcriptional coactivator 3
Database Link:	Entrez Gene 55534 Human Q96JK9
Background:	MAML3 acts as a transcriptional coactivator for NOTCH proteins. The protein has been shown to amplify NOTCH-induced transcription of HES1.
Synonyms:	Mam-3, MAML3, MAML-3
Protein Families:	Transcription Factors
Protein Pathways:	Notch signaling pathway



[View online »](#)

Product images:



Western blot analysis of MAML3 antibody (C-term) in HeLa cell line lysates (35ug/lane). MAML3 (arrow) was detected using the purified Pab.