

Product datasheet for **AP17542PU-N**

MAFF Rabbit Polyclonal Antibody

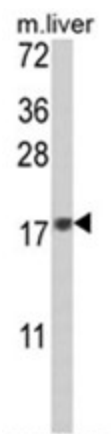
Product data:

Product Type:	Primary Antibodies
Applications:	WB
Recommended Dilution:	ELISA: 1/1,000. Western blotting: 1/50 - 1/100.
Reactivity:	Human, Mouse
Host:	Rabbit
Clonality:	Polyclonal
Immunogen:	KLH conjugated synthetic peptide selected from the Center region of human MAFF
Specificity:	This antibody reacts to MAFF.
Formulation:	PBS with 0.09% (W/V) sodium azide State: Liquid purified Ig
Concentration:	lot specific
Purification:	Saturated Ammonium Sulfate (SAS) precipitation
Conjugation:	Unconjugated
Storage:	Store the antibody undiluted at 2-8°C for one month or (in aliquots) at -20°C for longer. Avoid repeated freezing and thawing.
Stability:	Shelf life: one year from despatch.
Gene Name:	MAF bZIP transcription factor F
Database Link:	Entrez Gene 17133 Mouse Entrez Gene 23764 Human Q9ULX9
Background:	MAFF is a basic leucine zipper (bZIP) transcription factor that lacks a transactivation domain. It is known to bind the US-2 DNA element in the promoter of the oxytocin receptor (OTR) gene and most likely heterodimerizes with other leucine zipper-containing proteins to enhance expression of the OTR gene during term pregnancy. This protein can also form homodimers, and since it lacks a transactivation domain, the homodimer may act as a repressor of transcription.
Synonyms:	Transcription factor MafF
Protein Families:	Druggable Genome, Transcription Factors



[View online »](#)

Product images:



Western blot analysis of MAFF Antibody (Center) in mouse liver tissue lysates (35ug/lane). MAFF (arrow) was detected using the purified Pab.