

## Product datasheet for **AP17541PU-N**

### LUC7L (C-term) Rabbit Polyclonal Antibody

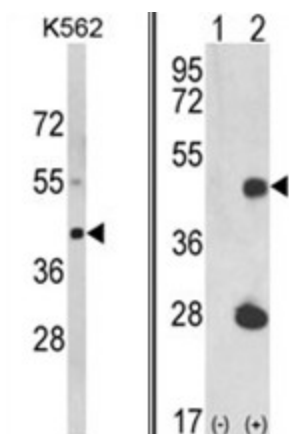
#### Product data:

Product Type:	Primary Antibodies
Applications:	WB
Recommended Dilution:	ELISA: 1/1,000. Western blotting: 1/100 - 1/500.
Reactivity:	Human
Host:	Rabbit
Clonality:	Polyclonal
Immunogen:	KLH conjugated synthetic peptide selected from the C-terminal region of human LUC7L
Specificity:	This antibody reacts to LUC7L.
Formulation:	PBS with 0.09% (W/V) sodium azide State: Liquid purified Ig
Concentration:	lot specific
Purification:	Affinity chromatography on Protein A
Conjugation:	Unconjugated
Storage:	Store the antibody undiluted at 2-8°C for one month or (in aliquots) at -20°C for longer. Avoid repeated freezing and thawing.
Stability:	Shelf life: one year from despatch.
Gene Name:	LUC7 like
Database Link:	<a href="#">Entrez Gene 55692 Human Q9NQ29</a>
Background:	LUC7L may bind to RNA via its Arg/Ser-rich domain.
Synonyms:	LUC7L1, SR+89, Luc7-like 1, LUC7B1



[View online »](#)

## Product images:



(LEFT) Western blot analysis of LUC7L Antibody (C-term) in K562 cell line lysates (35ug/lane). LUC7L (arrow) was detected using the purified Pab. (RIGHT) Western blot analysis of LUC7L (arrow) using rabbit polyclonal LUC7L Antibody (C-term). 293 cell lysates (2 ug/lane) either nontransfected (Lane 1) or transiently transfected with the LUC7L gene (Lane 2).