

Product datasheet for **AP17540PU-N**

LTA (Center) Rabbit Polyclonal Antibody

Product data:

Product Type:	Primary Antibodies
Applications:	FC, IHC, WB
Recommended Dilution:	ELISA: 1/1000. Western blotting: ~1/1000. Flow Cytometry: 1/10-1/50. Immunohistochemistry on Paraffin Sections: 1/50-1/100.
Reactivity:	Human
Host:	Rabbit
Clonality:	Polyclonal
Immunogen:	KLH conjugated synthetic peptide between 46-72 amino acids from the Central region of Human LTA.
Specificity:	This antibody recognizes Human TNF-beta / Lymphotoxin-alpha. Other species not tested.
Formulation:	PBS State: Liquid purified Ig fraction Preservative: 0.09% (W/V) Sodium Azide
Concentration:	lot specific
Purification:	Peptide Affinity Chromatography on Protein A
Conjugation:	Unconjugated
Storage:	Store undiluted at 2-8°C for one month or (in aliquots) at -20°C for longer. Avoid repeated freezing and thawing.
Stability:	Shelf life: one year from despatch.
Predicted Protein Size:	22297 Da
Gene Name:	lymphotoxin alpha
Database Link:	Entrez Gene 4049 Human P01374



[View online »](#)

Background:

LTA, a member of the tumor necrosis factor family, is a cytokine produced by lymphocytes. The protein is highly inducible, secreted, and forms heterotrimers with lymphotoxin-beta which anchor lymphotoxin-alpha to the cell surface. This protein also mediates a large variety of inflammatory, immunostimulatory, and antiviral responses, is involved in the formation of secondary lymphoid organs during development and plays a role in apoptosis.

Synonyms:

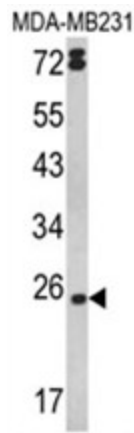
TNFB, TNFSF1, LTA, LT-alpha

Protein Families:

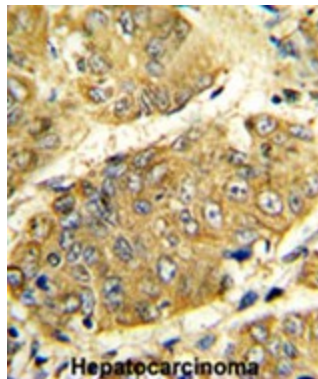
Druggable Genome, Secreted Protein, Transmembrane

Protein Pathways:

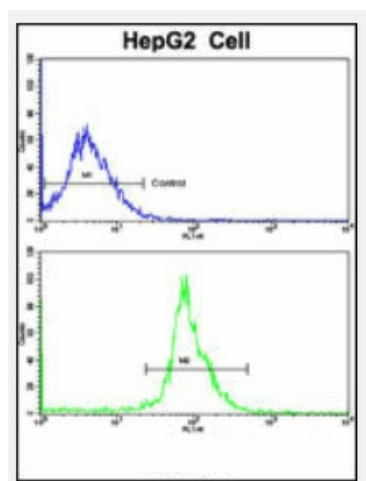
Antigen processing and presentation, Cytokine-cytokine receptor interaction, Type I diabetes mellitus

Product images:


Western blot analysis of LTA Antibody (Center) in MDA-MB231 cell line lysates (35ug/lane). LTA (arrow) was detected using the purified Pab.



Formalin-fixed and paraffin-embedded human hepatocarcinoma reacted with LTA Antibody (Center), which was peroxidase-conjugated to the secondary antibody, followed by DAB staining.



Flow Cytometric analysis of HepG2 cells using LTA Antibody (Center) (bottom histogram) compared to a negative control cell (top histogram). FITC-conjugated Goat-anti-Rabbit secondary antibodies were used for the analysis.