

## Product datasheet for **AP17538PU-N**

### LRG1 Rabbit Polyclonal Antibody

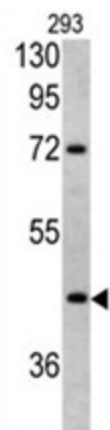
#### Product data:

Product Type:	Primary Antibodies
Applications:	WB
Recommended Dilution:	ELISA: 1/1,000. Western blotting: 1/50 - 1/100.
Reactivity:	Human
Host:	Rabbit
Clonality:	Polyclonal
Immunogen:	KLH conjugated synthetic peptide selected from the Center region of human LRG1
Specificity:	This antibody reacts to LRG1.
Formulation:	PBS with 0.09% (W/V) sodium azide State: Liquid purified Ig
Concentration:	lot specific
Purification:	Saturated Ammonium Sulfate (SAS) precipitation
Conjugation:	Unconjugated
Storage:	Store the antibody undiluted at 2-8°C for one month or (in aliquots) at -20°C for longer. Avoid repeated freezing and thawing.
Stability:	Shelf life: one year from despatch.
Gene Name:	leucine-rich alpha-2-glycoprotein 1
Database Link:	<a href="#">Entrez Gene 116844 Human P02750</a>
Background:	The leucine-rich repeat (LRR) family of proteins, including LRG1, have been shown to be involved in protein-protein interaction, signal transduction, and cell adhesion and development. LRG1 is expressed during granulocyte differentiation.
Synonyms:	Leucine-rich alpha-2-glycoprotein, LRG
Protein Families:	Secreted Protein



[View online »](#)

## Product images:



Western blot analysis of LRG1 antibody (Center) in 293 cell line lysates (35ug/lane). LRG1 (arrow) was detected using the purified Pab.