

Product datasheet for **AP17535PU-N**

Laminin beta 2 (LAMB2) (C-term) Rabbit Polyclonal Antibody

Product data:

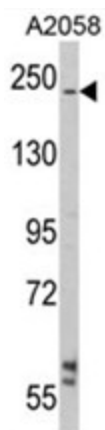
| | |
|-----------------------|---|
| Product Type: | Primary Antibodies |
| Applications: | WB |
| Recommended Dilution: | ELISA: 1/1,000. Western blotting: 1/50 - 1/100. |
| Reactivity: | Human |
| Host: | Rabbit |
| Clonality: | Polyclonal |
| Immunogen: | Immunized with a KLH conjugated synthetic peptide between 1579-1606 amino acids from the C-terminal region of human LAMB2 |
| Specificity: | This antibody reacts to LAMB2. |
| Formulation: | PBS with 0.09% (W/V) sodium azide State: Liquid purified Ig |
| Concentration: | lot specific |
| Purification: | Saturated Ammonium Sulfate (SAS) precipitation |
| Conjugation: | Unconjugated |
| Storage: | Store the antibody undiluted at 2-8°C for one month or (in aliquots) at -20°C for longer. Avoid repeated freezing and thawing. |
| Stability: | Shelf life: one year from despatch. |
| Gene Name: | laminin subunit beta 2 |
| Database Link: | Entrez Gene 3913 Human P55268 |
| Background: | Binding to cells via a high affinity receptor, laminin is thought to mediate the attachment, migration and organization of cells into tissues during embryonic development by interacting with other extracellular matrix components. |
| Synonyms: | S-laminin, Laminin B1s chain, LAMB2, LAMS, Laminin-11 subunit beta, Laminin-14 subunit beta, Laminin-15 subunit beta, Laminin-3 subunit beta, Laminin-4 subunit beta, Laminin-7 subunit beta, Laminin-9 subunit beta |
| Protein Families: | Druggable Genome, Secreted Protein |



[View online »](#)

Protein Pathways: ECM-receptor interaction, Focal adhesion, Pathways in cancer, Small cell lung cancer

Product images:



Western blot analysis of LAMB2 Antibody (C-term) (AP17535PU-N) in A2058 cell line lysates (35ug/lane). LAMB2 (arrow) was detected using the purified Pab.