

Product datasheet for **AP17534PU-N**

Lymphocyte Activation Gene 3 (LAG3) (Center) Rabbit Polyclonal Antibody

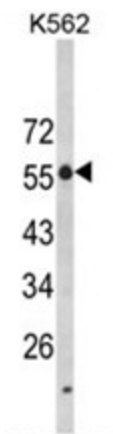
Product data:

| | |
|-------------------------|---|
| Product Type: | Primary Antibodies |
| Applications: | IHC, WB |
| Recommended Dilution: | ELISA: 1/1,000. Western blotting: 1/1000. Immunohistochemistry: 1/10-1/50. |
| Reactivity: | Human |
| Host: | Rabbit |
| Clonality: | Polyclonal |
| Immunogen: | KLH conjugated synthetic peptide selected from aa 103-132 at the Center region of human LAG3 |
| Specificity: | This antibody reacts to CD223. |
| Formulation: | PBS with 0.09% (W/V) sodium azide State: Liquidi purified Ig |
| Concentration: | lot specific |
| Purification: | Affinity chromatography on Protein A |
| Conjugation: | Unconjugated |
| Storage: | Store the antibody undiluted at 2-8°C for one month or (in aliquots) at -20°C for longer. Avoid repeated freezing and thawing. |
| Stability: | Shelf life: one year from despatch. |
| Predicted Protein Size: | 57449 Da. |
| Gene Name: | lymphocyte activating 3 |
| Database Link: | Entrez Gene 3902 Human P18627 |
| Background: | Lymphocyte-activation protein 3 belongs to Ig superfamily and contains 4 extracellular Ig-like domains. |
| Synonyms: | LAG-3, FDC |
| Protein Families: | Transmembrane |



[View online »](#)

Product images:



Western blot analysis of LAG3 Antibody (Center) in K562 cell line lysates (35ug/lane). LAG3 (arrow) was detected using the purified Pab.