

## Product datasheet for **AP17533PU-N**

### L Kynurenine Hydrolase (KYNU) (C-term) Rabbit Polyclonal Antibody

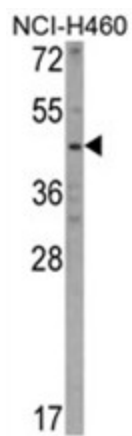
#### Product data:

Product Type:	Primary Antibodies
Applications:	WB
Recommended Dilution:	ELISA: 1/1,000. Western blotting: 1/50 - 1/100.
Reactivity:	Human
Host:	Rabbit
Clonality:	Polyclonal
Immunogen:	KLH conjugated synthetic peptide selected from the C-terminal region of human KYNU
Specificity:	This antibody reacts to KYNU.
Formulation:	PBS with 0.09% (W/V) sodium azide State: Liquid purified Ig
Concentration:	lot specific
Purification:	Saturated Ammonium Sulfate (SAS) precipitation
Conjugation:	Unconjugated
Storage:	Store the antibody undiluted at 2-8°C for one month or (in aliquots) at -20°C for longer. Avoid repeated freezing and thawing.
Stability:	Shelf life: one year from despatch.
Gene Name:	kynureninase
Database Link:	<a href="#">Entrez Gene 8942 Human Q16719</a>
Background:	KYNU is a pyridoxal-5'-phosphate (pyridoxal-P) dependent enzyme that catalyzes the cleavage of L-kynurenine and L-3-hydroxykynurenine into anthranilic and 3-hydroxyanthranilic acids, respectively. KYNU is involved in the biosynthesis of NAD cofactors from tryptophan through the kynurenine pathway.
Synonyms:	KYNU, L-kynurenine hydrolase
Protein Families:	Protease
Protein Pathways:	Metabolic pathways, Tryptophan metabolism



[View online »](#)

## Product images:



Western blot analysis of KYNU Antibody (C-term) in NCI-H460 cell line lysates (35ug/lane). KYNU (arrow) was detected using the purified Pab.