

Product datasheet for **AP17531PU-N**

Cytokeratin 4 (KRT4) (C-term) Rabbit Polyclonal Antibody

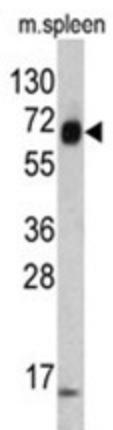
Product data:

Product Type:	Primary Antibodies
Applications:	WB
Recommended Dilution:	ELISA: 1/1,000. Western blotting: 1/50 - 1/100.
Reactivity:	Human, Mouse
Host:	Rabbit
Clonality:	Polyclonal
Immunogen:	KLH conjugated synthetic peptide selected from the C-terminal region of human KRT4
Specificity:	This antibody reacts to Cytokeratin-4 (KRT4).
Formulation:	PBS with 0.09% (W/V) sodium azide State: Liquid purified Ig
Concentration:	lot specific
Purification:	Saturated Ammonium Sulfate (SAS) precipitation
Conjugation:	Unconjugated
Storage:	Store the antibody undiluted at 2-8°C for one month or (in aliquots) at -20°C for longer. Avoid repeated freezing and thawing.
Stability:	Shelf life: one year from despatch.
Gene Name:	keratin 4
Database Link:	Entrez Gene 16682 Mouse Entrez Gene 3851 Human P19013
Background:	The protein is a member of the keratin family. The type II cytokeratins consist of basic or neutral proteins which are arranged in pairs of heterotypic keratin chains coexpressed during differentiation of simple and stratified epithelial tissues. This type II cytokeratin is specifically expressed in differentiated layers of the mucosal and esophageal epithelia with family member KRT13.
Synonyms:	KRT4, CYK4, Cytokeratin-4, CK4, Keratin-4, K4



[View online »](#)

Product images:



Western blot analysis of KRT4 antibody (C-term) in mouse spleen tissue lysates (35ug/lane). KRT4 (arrow) was detected using the purified Pab.