

## Product datasheet for **AP17528PU-N**

### Cytokeratin 14 (KRT14) Rabbit Polyclonal Antibody

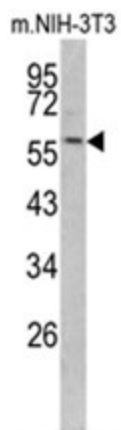
#### Product data:

Product Type:	Primary Antibodies
Applications:	WB
Recommended Dilution:	ELISA: 1/1,000. Western blotting: 1/50 - 1/100.
Reactivity:	Human
Host:	Rabbit
Clonality:	Polyclonal
Immunogen:	KLH conjugated synthetic peptide selected from the Center region of human KRT14
Specificity:	This antibody reacts to Cytokeratin-14 (KRT14).
Formulation:	PBS with 0.09% (W/V) sodium azide State: Liquid purified Ig
Concentration:	lot specific
Purification:	Saturated Ammonium Sulfate (SAS) precipitation
Conjugation:	Unconjugated
Storage:	Store the antibody undiluted at 2-8°C for one month or (in aliquots) at -20°C for longer. Avoid repeated freezing and thawing.
Stability:	Shelf life: one year from despatch.
Gene Name:	keratin 14
Database Link:	<a href="#">Entrez Gene 3861 Human P02533</a>
Background:	KRT14 is a member of the keratin family, the most diverse group of intermediate filaments. This protein, a type I keratin, is usually found as a heterotetramer with two keratin 5 molecules, a type II keratin. Together they form the cytoskeleton of epithelial cells.
Synonyms:	Cytokeratin-14, CK14, Keratin 14, K14, KRT14



[View online »](#)

## Product images:



Western blot analysis of KRT14 antibody (Center) in NIH-3T3 cell line lysates (35ug/lane). KRT14 (arrow) was detected using the purified Pab.