

Product datasheet for **AP17526PU-N**

Cytokeratin 10 (KRT10) (N-term) Rabbit Polyclonal Antibody

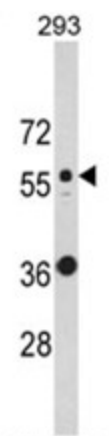
Product data:

| | |
|-----------------------|---|
| Product Type: | Primary Antibodies |
| Applications: | WB |
| Recommended Dilution: | ELISA: 1/1,000. Western blotting: 1/100 - 1/500. |
| Reactivity: | Human |
| Host: | Rabbit |
| Clonality: | Polyclonal |
| Immunogen: | KLH conjugated synthetic peptide selected from the N-terminal region of human KRT10 |
| Specificity: | This antibody reacts to Cytokeratin-10 (KRT10). |
| Formulation: | PBS with 0.09% (W/V) sodium azide State: Liquid purified Ig |
| Concentration: | lot specific |
| Purification: | Affinity chromatography on Protein A |
| Conjugation: | Unconjugated |
| Storage: | Store the antibody undiluted at 2-8°C for one month or (in aliquots) at -20°C for longer. Avoid repeated freezing and thawing. |
| Stability: | Shelf life: one year from despatch. |
| Gene Name: | keratin 10 |
| Database Link: | Entrez Gene 3858 Human P13645 |
| Background: | KRT10 is a member of the type I (acidic) cytokeratin family, which belongs to the superfamily of intermediate filament (IF) proteins. Keratins are heteropolymeric structural proteins which form the intermediate filament. These filaments, along with actin microfilaments and microtubules, compose the cytoskeleton of epithelial cells. Mutations in its gene are associated with epidermolytic hyperkeratosis. |
| Synonyms: | Cytokeratin-10, CK10, CK-10, Keratin-10, KRT10, KPP, K10 |



[View online »](#)

Product images:



Western blot analysis of KRT10 Antibody (N-term) in 293 cell line lysates (35ug/lane). KRT10 (arrow) was detected using the purified Pab.