

Product datasheet for **AP17525PU-N**

Cytokeratin 10 (KRT10) Rabbit Polyclonal Antibody

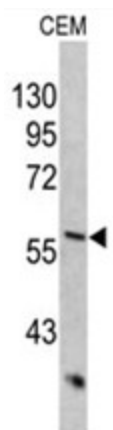
Product data:

Product Type:	Primary Antibodies
Applications:	WB
Recommended Dilution:	ELISA: 1/1,000. Western blotting: 1/50 - 1/100.
Reactivity:	Human
Host:	Rabbit
Clonality:	Polyclonal
Immunogen:	KLH conjugated synthetic peptide selected from the Center region of human KRT10
Specificity:	This antibody reacts to Cytokeratin-10 (KRT10).
Formulation:	PBS with 0.09% (W/V) sodium azide State: Liquid purified Ig
Concentration:	lot specific
Purification:	Saturated Ammonium Sulfate (SAS) precipitation
Conjugation:	Unconjugated
Storage:	Store the antibody undiluted at 2-8°C for one month or (in aliquots) at -20°C for longer. Avoid repeated freezing and thawing.
Stability:	Shelf life: one year from despatch.
Gene Name:	keratin 10
Database Link:	Entrez Gene 3858 Human P13645
Background:	KRT10 is a member of the type I (acidic) cytokeratin family, which belongs to the superfamily of intermediate filament (IF) proteins. Keratins are heteropolymeric structural proteins which form the intermediate filament. These filaments, along with actin microfilaments and microtubules, compose the cytoskeleton of epithelial cells. Mutations in its gene are associated with epidermolytic hyperkeratosis.
Synonyms:	Cytokeratin-10, CK10, CK-10, Keratin-10, KRT10, KPP, K10



[View online »](#)

Product images:



Western blot analysis of KRT10 antibody (Center) in CEM cell line lysates (35ug/lane). KRT10 (arrow) was detected using the purified Pab.