

Product datasheet for **AP17524PU-N**

KPNB1 (N-term) Rabbit Polyclonal Antibody

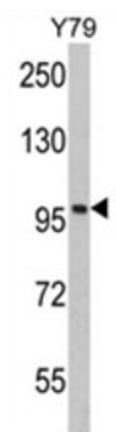
Product data:

Product Type:	Primary Antibodies
Applications:	WB
Recommended Dilution:	ELISA: 1/1,000. Western blotting: 1/50 - 1/100.
Reactivity:	Human
Host:	Rabbit
Clonality:	Polyclonal
Immunogen:	KLH conjugated synthetic peptide selected from the N-terminal region of human KPNB1
Specificity:	This antibody reacts to NTF97.
Formulation:	PBS with 0.09% (W/V) sodium azide State: Liquid purified Ig
Concentration:	lot specific
Purification:	Saturated Ammonium Sulfate (SAS)
Conjugation:	Unconjugated
Storage:	Store the antibody undiluted at 2-8°C for one month or (in aliquots) at -20°C for longer. Avoid repeated freezing and thawing.
Stability:	Shelf life: one year from despatch.
Gene Name:	karyopherin subunit beta 1
Database Link:	Entrez Gene 3837 Human Q14974
Background:	NTF97 is involved in nuclear protein import, either by associating itself with an adapter protein (for example, importin-alpha subunit which binds to nuclear localization signals (NLS) in cargo substrates), or by acting autonomously as a nuclear transport receptor.
Synonyms:	KPNB1, Nuclear factor P97, Importin-90
Protein Families:	Druggable Genome, Stem cell - Pluripotency



[View online »](#)

Product images:



Western blot analysis of KPNB1 Antibody (N-term) in Y79 cell line lysates (35ug/lane). KPNB1 (arrow) was detected using the purified Pab.