

Product datasheet for **AP17520PU-N**

KLF6 (N-term) Rabbit Polyclonal Antibody

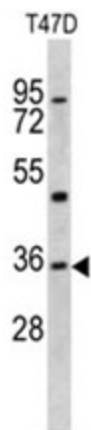
Product data:

Product Type:	Primary Antibodies
Applications:	WB
Recommended Dilution:	ELISA: 1/1,000. Western blotting: 1/50 - 1/100.
Reactivity:	Human
Host:	Rabbit
Clonality:	Polyclonal
Immunogen:	KLH conjugated synthetic peptide selected from the N-terminal region of human KLF6
Specificity:	This antibody reacts to KLF6.
Formulation:	PBS with 0.09% (W/V) sodium azide State: Liquid purified Ig
Concentration:	lot specific
Purification:	Saturated Ammonium Sulfate (SAS) precipitation
Conjugation:	Unconjugated
Storage:	Store the antibody undiluted at 2-8°C for one month or (in aliquots) at -20°C for longer. Avoid repeated freezing and thawing.
Stability:	Shelf life: one year from despatch.
Gene Name:	Kruppel-like factor 6
Database Link:	Entrez Gene 1316 Human Q99612
Background:	COPEB is a member of the Kruppel-like family of transcription factors. The zinc finger protein is a transcriptional activator, and functions as a tumor suppressor.
Synonyms:	KLF6, BCD1, COPEB, CPBP, ST12, Krueppel-like factor 6, B-cell-derived protein 1, Proto-oncogene BCD1, Transcription factor Zf9
Protein Families:	Druggable Genome, ES Cell Differentiation/IPS, Transcription Factors



[View online »](#)

Product images:



Western blot analysis of KLF6 antibody (N-term) in T47D cell line lysates (35ug/lane). KLF6 (arrow) was detected using the purified Pab.