

Product datasheet for **AP17518PU-N**

KLF5 Rabbit Polyclonal Antibody

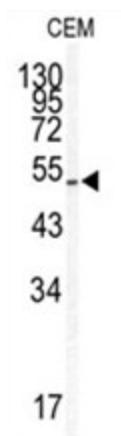
Product data:

Product Type:	Primary Antibodies
Applications:	WB
Recommended Dilution:	ELISA: 1/1,000. Western blotting: 1/50 - 1/100.
Reactivity:	Human
Host:	Rabbit
Clonality:	Polyclonal
Immunogen:	KLH conjugated synthetic peptide selected from the Center region of human KLF5
Specificity:	This antibody reacts to KLF5.
Formulation:	PBS with 0.09% (W/V) sodium azide State: Liquid purified Ig
Concentration:	lot specific
Purification:	Saturated Ammonium Sulfate (SAS) precipitation
Conjugation:	Unconjugated
Storage:	Store the antibody undiluted at 2-8°C for one month or (in aliquots) at -20°C for longer. Avoid repeated freezing and thawing.
Stability:	Shelf life: one year from despatch.
Gene Name:	Kruppel-like factor 5 (intestinal)
Database Link:	Entrez Gene 688 Human Q13887
Background:	KLF5 is a member of the Kruppel-like factor subfamily of zinc finger proteins. Since the protein localizes to the nucleus and binds the epidermal growth factor response element, the protein is thought to be a transcription factor.
Synonyms:	KLF5, BTEB2, CKLF, IKLF, Krueppel-like factor 5, Colon krueppel-like factor, Transcription factor BTEB2, BTE-binding protein 2, GC-box-binding protein 2
Protein Families:	Embryonic stem cells, ES Cell Differentiation/IPS, Induced pluripotent stem cells, Transcription Factors



[View online »](#)

Product images:



Western blot analysis of KLF5 antibody (Center) in CEM cell line lysates (35ug/lane). KLF5 (arrow) was detected using the purified Pab.