

Product datasheet for **AP17516PU-N**

Kir2.1 (KCNJ2) (C-term) Rabbit Polyclonal Antibody

Product data:

| | |
|------------------------------|--|
| Product Type: | Primary Antibodies |
| Applications: | WB |
| Recommended Dilution: | ELISA: 1/1,000. Western blotting: 1/100 - 1/500. |
| Reactivity: | Human, Mouse |
| Host: | Rabbit |
| Clonality: | Polyclonal |
| Immunogen: | KLH conjugated synthetic peptide selected from the C-terminal region of human KCNJ2 |
| Specificity: | This antibody reacts to KCNJ2. |
| Formulation: | PBS with 0.09% (W/V) sodium azide State: Liquid purified Ig |
| Concentration: | lot specific |
| Purification: | Affinity chromatography on Protein A |
| Conjugation: | Unconjugated |
| Storage: | Store the antibody undiluted at 2-8°C for one month or (in aliquots) at -20°C for longer. Avoid repeated freezing and thawing. |
| Stability: | Shelf life: one year from despatch. |
| Gene Name: | potassium voltage-gated channel subfamily J member 2 |
| Database Link: | Entrez Gene 16518 Mouse Entrez Gene 3759 Human P63252 |
| Background: | Potassium channels are present in most mammalian cells, where they participate in a wide range of physiologic responses. This protein is an integral membrane protein and inward-rectifier type potassium channel. This protein, which has a greater tendency to allow potassium to flow into a cell rather than out of a cell, probably participates in establishing action potential waveform and excitability of neuronal and muscle tissues. Mutations in this gene have been associated with Andersen syndrome, which is characterized by periodic paralysis, cardiac arrhythmias, and dysmorphic features. |

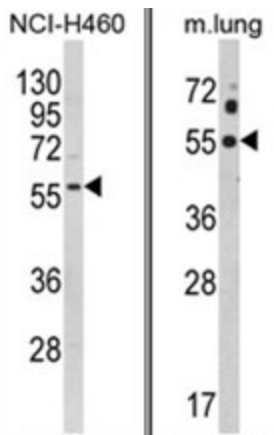


[View online »](#)

Synonyms: KCNJ2, HIRK1, Inward rectifier K(+) channel Kir2.1, Cardiac inward rectifier potassium channel, IRK1, Inward rectifier potassium channel 2

Protein Families: Druggable Genome, Ion Channels: Potassium, Transmembrane

Product images:



(LEFT) Western blot analysis of KCNJ2 Antibody (C-term) in NCI-H460 cell line lysates (35ug/lane). KCNJ2 (arrow) was detected using the purified Pab. (RIGHT) Western blot analysis of KCNJ2 Antibody (C-term) in mouse lung tissue lysates (35ug/lane). KCNJ2 (arrow) was detected using the purified Pab.