

Product datasheet for **AP17512PU-N**

ITM2A (N-term) Rabbit Polyclonal Antibody

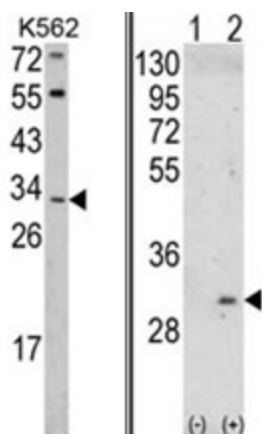
Product data:

Product Type:	Primary Antibodies
Applications:	WB
Recommended Dilution:	ELISA: 1/1,000. Western blotting: 1/50 - 1/100.
Reactivity:	Human
Host:	Rabbit
Clonality:	Polyclonal
Immunogen:	KLH conjugated synthetic peptide selected from the N-terminal region of human ITM2A
Specificity:	This antibody reacts to ITM2A.
Formulation:	PBS with 0.09% (W/V) sodium azide State: Liquid purified Ig
Concentration:	lot specific
Purification:	Saturated Ammonium Sulfate (SAS) precipitation
Conjugation:	Unconjugated
Storage:	Store the antibody undiluted at 2-8°C for one month or (in aliquots) at -20°C for longer. Avoid repeated freezing and thawing.
Stability:	Shelf life: one year from despatch.
Gene Name:	integral membrane protein 2A
Database Link:	Entrez Gene 9452 Human O43736
Background:	ITM2A is induced during thymocyte selection and T cell activation and causes downregulation of CD8 when overexpressed in CD4(+)CD8(+) double positive thymocytes.
Synonyms:	Protein E25
Protein Families:	Transmembrane



[View online »](#)

Product images:



(LEFT) Western blot analysis of ITM2A Antibody (N-term) in K562 cell line lysates (35ug/lane). ITM2A (arrow) was detected using the purified Pab. (RIGHT) Western blot analysis of ITM2A (arrow) using rabbit polyclonal ITM2A Antibody (N-term). 293 cell lysates (2 ug/lane) either nontransfected (Lane 1) or transiently transfected with the ITM2A gene (Lane 2).