

## Product datasheet for **AP17511PU-N**

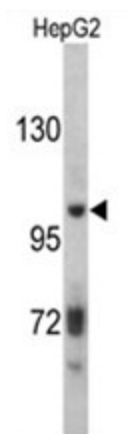
### ITIH2 (C-term) Rabbit Polyclonal Antibody

#### Product data:

Product Type:	Primary Antibodies
Applications:	WB
Recommended Dilution:	ELISA: 1/1,000. Western blotting: 1/50 - 1/100.
Reactivity:	Human
Host:	Rabbit
Clonality:	Polyclonal
Immunogen:	KLH conjugated synthetic peptide selected from the C-terminal region of human ITIH2
Specificity:	This antibody reacts to ITIH2.
Formulation:	PBS with 0.09% (W/V) sodium azide State: Liquid purified Ig
Concentration:	lot specific
Purification:	Saturated Ammonium Sulfate (SAS) precipitation
Conjugation:	Unconjugated
Storage:	Store the antibody undiluted at 2-8°C for one month or (in aliquots) at -20°C for longer. Avoid repeated freezing and thawing.
Stability:	Shelf life: one year from despatch.
Gene Name:	inter-alpha-trypsin inhibitor heavy chain 2
Database Link:	<a href="#">Entrez Gene 3698 Human P19823</a>
Background:	ITIH2 may act as a carrier of hyaluronan in serum or as a binding protein between hyaluronan and other matrix protein, including those on cell surfaces in tissues to regulate the localization, synthesis and degradation of hyaluronan which are essential to cells undergoing biological processes.
Synonyms:	IGHEP2, ITI heavy chain H2, ITI-HC2, SHAP



[View online »](#)

**Product images:**


Western blot analysis of ITIH2 antibody (C-term) in HepG2 cell line lysates (35ug/lane). ITIH2 (arrow) was detected using the purified Pab.