

## Product datasheet for **AP17504PU-N**

### IMPDH2 Rabbit Polyclonal Antibody

#### Product data:

Product Type:	Primary Antibodies
Applications:	WB
Recommended Dilution:	ELISA: 1/1,000. Western blotting: 1/50 - 1/100.
Reactivity:	Human
Host:	Rabbit
Clonality:	Polyclonal
Immunogen:	KLH conjugated synthetic peptide selected from the Center region of human IMPDH2
Specificity:	This antibody reacts to IMPDH2.
Formulation:	PBS with 0.09% (W/V) sodium azide State: Liquid purified Ig
Concentration:	lot specific
Purification:	Saturated Ammonium Sulfate (SAS) precipitation
Conjugation:	Unconjugated
Storage:	Store the antibody undiluted at 2-8°C for one month or (in aliquots) at -20°C for longer. Avoid repeated freezing and thawing.
Stability:	Shelf life: one year from despatch.
Gene Name:	Homo sapiens IMP (inosine 5'-monophosphate) dehydrogenase 2 (IMPDH2)
Database Link:	<a href="#">Entrez Gene 3615 Human P12268</a>
Background:	IMPDH2 is the rate-limiting enzyme in the de novo guanine nucleotide biosynthesis. It is thus involved in maintaining cellular guanine deoxy- and ribonucleotide pools needed for DNA and RNA synthesis. The protein catalyzes the NAD-dependent oxidation of inosine-5'-monophosphate into xanthine-5'-monophosphate, which is then converted into guanosine-5'-monophosphate. Its gene is up-regulated in some neoplasms, suggesting it may play a role in malignant transformation.
Synonyms:	IMPD2, Inosine-5'-monophosphate dehydrogenase 2, IMP dehydrogenase 2, EC=1.1.1.205, IMPDH-II, IMPD-2

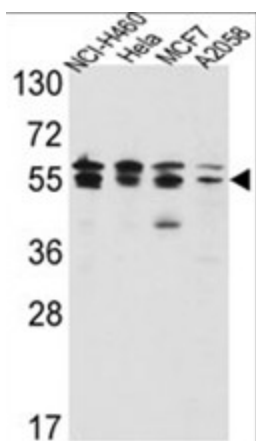


[View online »](#)

**Protein Families:** Druggable Genome

**Protein Pathways:** Drug metabolism - other enzymes, Metabolic pathways, Purine metabolism

**Product images:**



Western blot analysis of IMPDH2 Antibody (Center) in NCI-H460, HeLa, MCF7, A2058 cell line lysates (35ug/lane). IMPDH2 (arrow) was detected using the purified Pab.