

Product datasheet for **AP17501PU-N**

IL2 Rabbit Polyclonal Antibody

Product data:

Product Type:	Primary Antibodies
Applications:	IHC, WB
Recommended Dilution:	ELISA: 1/1,000. Western blotting: 1/100-1/500. Immunohistochemistry: 1/50-1/100.
Reactivity:	Human
Host:	Rabbit
Isotype:	Ig
Clonality:	Polyclonal
Immunogen:	KLH conjugated synthetic peptide between aa 57-86 from the Center region of Human IL2
Specificity:	This antibody reacts to IL2.
Formulation:	PBS with 0.09% (W/V) Sodium Azide as preservative State: Purified State: Liquid purified Ig fraction
Concentration:	lot specific
Purification:	Affinity Chromatography on Protein A followed by peptide affinity purification
Conjugation:	Unconjugated
Storage:	Store the antibody undiluted at 2-8°C for one month or (in aliquots) at -20°C for longer. Avoid repeated freezing and thawing.
Stability:	Shelf life: one year from despatch.
Gene Name:	Homo sapiens interleukin 2 (IL2)
Database Link:	Entrez Gene 3558 Human P60568
Background:	IL2 is a secreted cytokine that is important for the proliferation of T and B lymphocytes. The receptor of this cytokine is a heterotrimeric protein complex whose gamma chain is also shared by interleukin 4 (IL4) and interleukin 7(IL7).
Synonyms:	IL-2, TCGF

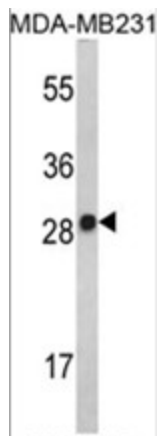


[View online »](#)

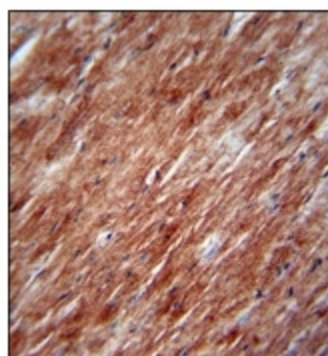
Protein Families: Druggable Genome, Secreted Protein

Protein Pathways: Allograft rejection, Autoimmune thyroid disease, Cytokine-cytokine receptor interaction, Graft-versus-host disease, Jak-STAT signaling pathway, T cell receptor signaling pathway, Type I diabetes mellitus

Product images:



Western blot analysis of IL2 Antibody (Center) in MDA-MB231 cell line lysates (35 ug/lane). IL2 (arrow) was detected using the purified Pab.



IL2 Antibody staining of Formalin Fixed, Paraffin Embedded Mouse heart tissue followed by peroxidase conjugation of the secondary antibody and DAB staining. This data demonstrates the use of the IL2 Antibody (Center) for Immunohistochemistry. Clinical relevance has not been evaluated.