

Product datasheet for **AP17498PU-N**

IL1 alpha (IL1A) Rabbit Polyclonal Antibody

Product data:

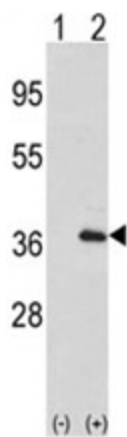
Product Type:	Primary Antibodies
Applications:	WB
Recommended Dilution:	ELISA: 1/1,000. Western blotting: 1/100 - 1/500.
Reactivity:	Human
Host:	Rabbit
Clonality:	Polyclonal
Immunogen:	KLH conjugated synthetic peptide selected from the amino acid residues surrounding S87 of human IL1A
Specificity:	This antibody reacts to IL-1 alpha.
Formulation:	PBS with 0.09% (W/V) sodium azide State: Liquid purified Ig
Concentration:	lot specific
Purification:	Affinity chromatography on Protein A
Conjugation:	Unconjugated
Storage:	Store the antibody undiluted at 2-8°C for one month or (in aliquots) at -20°C for longer. Avoid repeated freezing and thawing.
Stability:	Shelf life: one year from despatch.
Gene Name:	interleukin 1 alpha
Database Link:	Entrez Gene 3552 Human P01583
Background:	IL1A is a member of the interleukin 1 cytokine family. This cytokine is a pleiotropic cytokine involved in various immune responses, inflammatory processes, and hematopoiesis. This cytokine is produced by monocytes and macrophages as a proprotein, which is proteolytically processed and released in response to cell injury, and thus induces apoptosis.
Synonyms:	IL-1 alpha, IL1F1, IL1A, Hematopoietin-1
Protein Families:	Druggable Genome, Secreted Protein



[View online »](#)

Protein Pathways:

Apoptosis, Cytokine-cytokine receptor interaction, Graft-versus-host disease, Hematopoietic cell lineage, MAPK signaling pathway, Prion diseases, Type I diabetes mellitus

Product images:

Western blot analysis of IL1A (arrow) using rabbit polyclonal IL1A-pS87. 293 cell lysates (2 ug/lane) either nontransfected (Lane 1) or transiently transfected with the IL1A gene (Lane 2) (Origene Technologies).