

Product datasheet for **AP17497PU-N**

IL17B Receptor (IL17RB) Rabbit Polyclonal Antibody

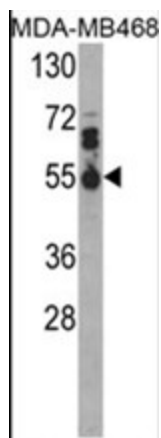
Product data:

Product Type:	Primary Antibodies
Applications:	WB
Recommended Dilution:	ELISA: 1/1,000. Western blotting: 1/50 - 1/100.
Reactivity:	Human
Host:	Rabbit
Clonality:	Polyclonal
Immunogen:	KLH conjugated synthetic peptide selected from the Center region of human IL17RB
Specificity:	This antibody reacts to IL17RB.
Formulation:	PBS with 0.09% (W/V) sodium azide State: Liquid purified Ig
Concentration:	lot specific
Purification:	Saturated Ammonium Sulfate (SAS) precipitation
Conjugation:	Unconjugated
Storage:	Store the antibody undiluted at 2-8°C for one month or (in aliquots) at -20°C for longer. Avoid repeated freezing and thawing.
Stability:	Shelf life: one year from despatch.
Gene Name:	interleukin 17 receptor B
Database Link:	Entrez Gene 55540 Human Q9NRM6
Background:	IL17RB is a cytokine receptor. This receptor specifically binds to IL17B and IL17E, but does not bind to IL17 and IL17C. This receptor has been shown to mediate the activation of NF-kappaB and the production of IL8 induced by IL17E.
Synonyms:	IL-17 receptor B, IL-17RB, Interleukin-17B receptor, IL-17 receptor homolog 1, Cytokine receptor CRL4, EVI27
Protein Families:	Druggable Genome, Secreted Protein, Transmembrane
Protein Pathways:	Cytokine-cytokine receptor interaction



[View online »](#)

Product images:



Western blot analysis of IL17RB Antibody (Center) in MDA-MB468 cell line lysates (35ug/lane). IL17RB (arrow) was detected using the purified Pab.