

Product datasheet for **AP17493PU-N**

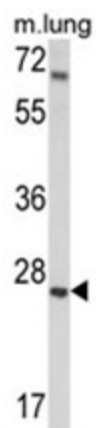
IGFBP4 (N-term) Rabbit Polyclonal Antibody

Product data:

Product Type:	Primary Antibodies
Applications:	WB
Recommended Dilution:	ELISA: 1/1,000. Western blotting: 1/100-1/500.
Reactivity:	Human, Mouse
Host:	Rabbit
Clonality:	Polyclonal
Immunogen:	KLH conjugated synthetic peptide selected from the N-terminal region of Human IGFBP4.
Specificity:	This antibody recognizes IGFBP4 (N-term).
Formulation:	PBS with 0.09% (W/V) Sodium Azide as preservative State: Liquid purified Ig fraction
Concentration:	lot specific
Purification:	Affinity Chromatography on Protein A
Conjugation:	Unconjugated
Storage:	Store the antibody undiluted at 2-8°C for one month or (in aliquots) at -20°C for longer. Avoid repeated freezing and thawing.
Stability:	Shelf life: one year from despatch.
Gene Name:	insulin like growth factor binding protein 4
Database Link:	Entrez Gene 16010 Mouse Entrez Gene 3487 Human P22692
Background:	IGFBP4 has an IGFBP domain and a thyroglobulin type-I domain. The protein binds both insulin-like growth factors (IGFs) I and II and circulates in the plasma in both glycosylated and non-glycosylated forms. Binding of this protein prolongs the half-life of the IGFs and alters their interaction with cell surface receptors.
Synonyms:	IGF-binding protein 4, IGFBP-4, IBP4, IBP-4
Note:	Calculated Molecular Weight: 27934 Da
Protein Families:	Secreted Protein



[View online »](#)

Product images:

Western blot analysis of IGFBP4 Antibody (N-term) in mouse lung tissue lysates (35ug/lane). IGFBP4 (arrow) was detected using the purified Pab.