

Product datasheet for **AP17490PU-N**

HIV TAT specific factor 1 (HTATSF1) (N-term) Rabbit Polyclonal Antibody

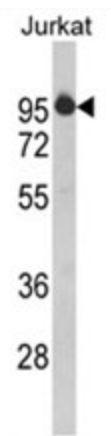
Product data:

Product Type:	Primary Antibodies
Applications:	WB
Recommended Dilution:	ELISA: 1/1,000. Western blotting: 1/100 - 1/500.
Reactivity:	Human
Host:	Rabbit
Clonality:	Polyclonal
Immunogen:	KLH conjugated synthetic peptide selected from the N-terminal region of human HTATSF1
Specificity:	This antibody reacts to HTATSF1.
Formulation:	PBS with 0.09% (W/V) sodium azide State: Liquid purified Ig
Concentration:	lot specific
Purification:	Affinity chromatography on Protein A
Conjugation:	Unconjugated
Storage:	Store the antibody undiluted at 2-8°C for one month or (in aliquots) at -20°C for longer. Avoid repeated freezing and thawing.
Stability:	Shelf life: one year from despatch.
Gene Name:	HIV-1 Tat specific factor 1
Database Link:	Entrez Gene 27336 Human O43719
Background:	HTATSF1 functions as a cofactor for the stimulation of transcriptional elongation by HIV-1 Tat, which binds to the HIV-1 promoter through Tat-TAR interaction. This protein may also serve as a dual-function factor to couple transcription and splicing and to facilitate their reciprocal activation.
Synonyms:	Tat-SF1
Protein Families:	Transcription Factors



[View online »](#)

Product images:



Western blot analysis of HTATSF1 Antibody (N-term) in Jurkat cell line lysates (35ug/lane). HTATSF1 (arrow) was detected using the purified Pab.