

Product datasheet for **AP17488PU-N**

HSP27 (HSPB1) Rabbit Polyclonal Antibody

Product data:

Product Type:	Primary Antibodies
Applications:	WB
Recommended Dilution:	ELISA: 1/1,000. Western blotting: 1/50 - 1/100.
Reactivity:	Human
Host:	Rabbit
Clonality:	Polyclonal
Immunogen:	KLH conjugated synthetic peptide selected from the Center region of human HSP27
Specificity:	This antibody reacts to HSPB1 / HSP27.
Formulation:	PBS with 0.09% (W/V) sodium azide State: Liquid purified Ig
Concentration:	lot specific
Purification:	Saturated Ammonium Sulfate (SAS) precipitation
Conjugation:	Unconjugated
Storage:	Store the antibody undiluted at 2-8°C for one month or (in aliquots) at -20°C for longer. Avoid repeated freezing and thawing.
Stability:	Shelf life: one year from despatch.
Gene Name:	heat shock protein family B (small) member 1
Database Link:	Entrez Gene 3315 Human P04792



[View online »](#)

Background:

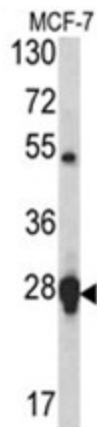
In response to adverse changes in their environment, cells from many organisms increase the expression of a class of proteins referred to as heat shock or stress proteins. HSBP1 exhibits rapid increased phosphorylation in response to various mitogens, tumor promoters (e.g. phorbol esters) and calcium ionophores, and high levels are associated with carcinoma of the breast and with endometrial adenocarcinomas. Heat shock of HeLa cell cultures, or treatment with arsenite, phorbol ester, or tumor necrosis factor, causes a rapid phosphorylation of preexisting HSBP1, with Ser82 as the major site and Ser78 the minor site of phosphorylation. HSBP1 may exert phosphorylation-activated functions linked with growth signaling pathways in unstressed cells. A homeostatic function at this level could protect cells from adverse effects of signal transduction systems which may be activated inappropriately during stress.

Synonyms:

Heat shock protein beta-1, Heat shock 27 kDa protein, HSP28, 28 kDa heat shock protein, SRP27, HSP25

Protein Pathways:

MAPK signaling pathway, VEGF signaling pathway

Product images:

Western blot analysis of HSP27 antibody (Center) in MCF-7 cell line lysates (35ug/lane). HSP27 (arrow) was detected using the purified Pab.