

## Product datasheet for **AP17484PU-N**

### Hemopexin (HPX) Rabbit Polyclonal Antibody

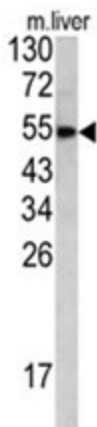
#### Product data:

|                       |   |
|-----------------------|---|
| Product Type:         | Primary Antibodies  |
| Applications:         | WB  |
| Recommended Dilution: | ELISA: 1/1,000.<br>Western blotting: 1/50 - 1/100.  |
| Reactivity:           | Human, Mouse  |
| Host:                 | Rabbit  |
| Clonality:            | Polyclonal  |
| Immunogen:            | KLH conjugated synthetic peptide selected from the Center region of human HPX   |
| Specificity:          | This antibody reacts to HPX.  |
| Formulation:          | PBS with 0.09% (W/V) sodium azide<br>State: Liquid purified Ig  |
| Concentration:        | lot specific  |
| Purification:         | Saturated Ammonium Sulfate (SAS) precipitation  |
| Conjugation:          | Unconjugated  |
| Storage:              | Store the antibody undiluted at 2-8°C for one month or (in aliquots) at -20°C for longer.<br>Avoid repeated freezing and thawing.   |
| Stability:            | Shelf life: one year from despatch.   |
| Gene Name:            | hemopexin   |
| Database Link:        | <a href="#">Entrez Gene 15458 Mouse</a> <a href="#">Entrez Gene 3263 Human</a><br><a href="#">P02790</a>  |
| Background:           | HPX is a plasma glycoprotein that binds heme with high affinity. The protein is an acute phase protein that transports heme from the plasma to the liver and may be involved in protecting cells from oxidative stress. |
| Synonyms:             | Beta-1B-glycoprotein  |
| Protein Families:     | Secreted Protein  |



[View online »](#)

## Product images:



Western blot analysis of HPX antibody (Center) in mouse liver tissue lysates (35ug/lane). HPX (arrow) was detected using the purified Pab.