

## Product datasheet for **AP17482PU-N**

### Prostaglandin dehydrogenase 1 (HPGD) (C-term) Rabbit Polyclonal Antibody

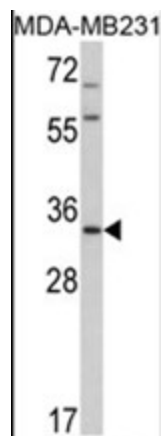
#### Product data:

Product Type:	Primary Antibodies
Applications:	WB
Recommended Dilution:	ELISA: 1/1,000. Western blotting: 1/50 - 1/100.
Reactivity:	Human
Host:	Rabbit
Clonality:	Polyclonal
Immunogen:	KLH conjugated synthetic peptide selected from the C-terminal region of human HPGD
Specificity:	This antibody reacts to HPGD.
Formulation:	PBS with 0.09% (W/V) sodium azide State: Liquid purified Ig
Concentration:	lot specific
Purification:	Saturated Ammonium Sulfate (SAS) precipitation
Conjugation:	Unconjugated
Storage:	Store the antibody undiluted at 2-8°C for one month or (in aliquots) at -20°C for longer. Avoid repeated freezing and thawing.
Stability:	Shelf life: one year from despatch.
Gene Name:	hydroxyprostaglandin dehydrogenase 15-(NAD)
Database Link:	<a href="#">Entrez Gene 3248 Human P15428</a>
Background:	HPGD is a member of the short-chain nonmetalloenzyme alcohol dehydrogenase protein family. This protein is responsible for the metabolism of prostaglandins, which function in a variety of physiologic and cellular processes such as inflammation.
Synonyms:	15-hydroxyprostaglandin dehydrogenase, PGDH, PGDH1, Prostaglandin dehydrogenase 1
Protein Families:	Druggable Genome



[View online »](#)

## Product images:



Western blot analysis of HPGD Antibody (C-term) in MDA-MB231 cell line lysates (35ug/lane). HPGD (arrow) was detected using the purified Pab.