

Product datasheet for **AP17475PU-N**

HMGCS2 (C-term) Rabbit Polyclonal Antibody

Product data:

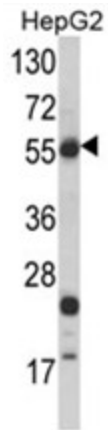
Product Type:	Primary Antibodies
Applications:	WB
Recommended Dilution:	ELISA: 1/1,000. Western blotting: 1/50 - 1/100.
Reactivity:	Human
Host:	Rabbit
Clonality:	Polyclonal
Immunogen:	KLH conjugated synthetic peptide selected from the C-terminal region of human HMGCS2
Specificity:	This antibody reacts to HMGCS2.
Formulation:	PBS with 0.09% (W/V) sodium azide State: Liquid purified Ig
Concentration:	lot specific
Purification:	Saturated Ammonium Sulfate (SAS) precipitation
Conjugation:	Unconjugated
Storage:	Store the antibody undiluted at 2-8°C for one month or (in aliquots) at -20°C for longer. Avoid repeated freezing and thawing.
Stability:	Shelf life: one year from despatch.
Gene Name:	3-hydroxy-3-methylglutaryl-CoA synthase 2
Database Link:	Entrez Gene 3158 Human P54868
Background:	HMGCS2 belongs to the HMG-CoA synthase family. It is a mitochondrial enzyme that catalyzes the first reaction of ketogenesis, a metabolic pathway that provides lipid-derived energy for various organs during times of carbohydrate deprivation, such as fasting.
Synonyms:	mitochondrial HMG-CoA synthase
Protein Families:	Druggable Genome



[View online »](#)

Protein Pathways:

Butanoate metabolism, Metabolic pathways, PPAR signaling pathway, Synthesis and degradation of ketone bodies, Terpenoid backbone biosynthesis, Valine, leucine and isoleucine degradation

Product images:

Western blot analysis of HMGCS2 Antibody (C-term) in HepG2 cell line lysates (35ug/lane). HMGCS2 (arrow) was detected using the purified Pab.