

Product datasheet for **AP17473PU-N**

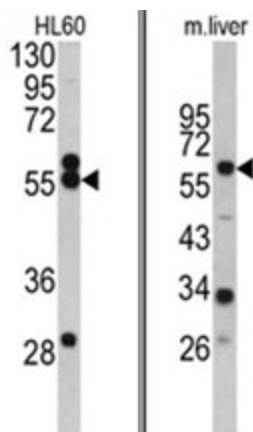
HMGC1 Rabbit Polyclonal Antibody

Product data:

Product Type:	Primary Antibodies
Applications:	WB
Recommended Dilution:	ELISA: 1/1,000. Western blotting: 1/50 - 1/100.
Reactivity:	Human, Mouse
Host:	Rabbit
Clonality:	Polyclonal
Immunogen:	KLH conjugated synthetic peptide selected from the Center region of human HMGC1
Specificity:	This antibody reacts to HMGC1.
Formulation:	PBS with 0.09% (W/V) sodium azide State: Liquid purified Ig
Concentration:	lot specific
Purification:	Saturated Ammonium Sulfate (SAS) precipitation
Conjugation:	Unconjugated
Storage:	Store the antibody undiluted at 2-8°C for one month or (in aliquots) at -20°C for longer. Avoid repeated freezing and thawing.
Stability:	Shelf life: one year from despatch.
Gene Name:	3-hydroxy-3-methylglutaryl-CoA synthase 1
Database Link:	Entrez Gene 208715 Mouse Entrez Gene 3157 Human Q01581
Background:	HMGC1 condenses acetyl-CoA with acetoacetyl-CoA to form HMG-CoA, which is the substrate for HMG-CoA reductase.
Synonyms:	HMGC1
Protein Families:	Druggable Genome
Protein Pathways:	Butanoate metabolism, Metabolic pathways, Synthesis and degradation of ketone bodies, Terpenoid backbone biosynthesis, Valine, leucine and isoleucine degradation



[View online »](#)

Product images:

(LEFT) Western blot analysis of HMGC51 antibody (Center) in HL60 cell line lysates (35ug/lane). HMGC51 (arrow) was detected using the purified Pab. (RIGHT) Western blot analysis of HMGC51 antibody (Center) in mouse liver tissue lysates (35ug/lane). HMGC51 (arrow) was detected using the purified Pab.