

Product datasheet for **AP17466PU-N**

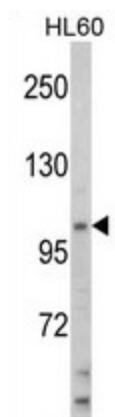
HLTF (Center) Rabbit Polyclonal Antibody

Product data:

Product Type:	Primary Antibodies
Applications:	WB
Recommended Dilution:	Western blot: 1:50 - 1:100. ELISA: 1:1,000.
Reactivity:	Human
Host:	Rabbit
Clonality:	Polyclonal
Immunogen:	KLH conjugated synthetic peptide selected from the Center region of human HIP116A
Specificity:	This antibody detects HIP116A Center.
Formulation:	PBS with 0.70% (W/V) sodium azide State: Liquid Ig fraction
Concentration:	lot specific
Purification:	Prepared by Saturated Ammonium Sulfate (SAS) precipitation followed by dialysis against PBS
Conjugation:	Unconjugated
Storage:	Store the antibody at 2 - 8 °C up to one month or (in aliquots) at -20 °C for longer. Avoid repeated freezing and thawing.
Stability:	Shelf life: one year from despatch.
Gene Name:	helicase-like transcription factor
Database Link:	Entrez Gene 6596 Human Q14527
Background:	HIP116A is a member of the SWI/SNF family. Members of this family have helicase and ATPase activities and are thought to regulate transcription of certain genes by altering the chromatin structure around those genes. This protein contains a RING finger DNA binding motif.
Synonyms:	Helicase-like transcription factor, SNF2L3, ZBU1, HIP116, HIP116A, RNF80
Note:	Molecular weight: 113929 Da
Protein Families:	Druggable Genome, Transcription Factors



[View online »](#)

Product images:

Western blot analysis of HIP116A Antibody (Center) in HL60 cell line lysates (35 ug/lane). HIP116A (arrow) was detected using the purified Pab.