

Product datasheet for **AP17451PU-N**

Granzyme M (GZMM) Rabbit Polyclonal Antibody

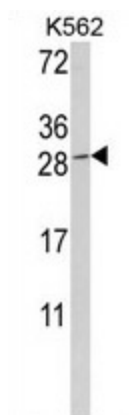
Product data:

Product Type:	Primary Antibodies
Applications:	WB
Recommended Dilution:	Western blot: 1:50 - 1:100. ELISA: 1:1,000.
Reactivity:	Human
Host:	Rabbit
Clonality:	Polyclonal
Immunogen:	KLH conjugated synthetic peptide selected from the Center region of human GZMM
Specificity:	This antibody detects GZMM at Center.
Formulation:	PBS with 0.33% (W/V) sodium azide State: Liquid Ig fraction
Concentration:	lot specific
Purification:	Prepared by Saturated Ammonium Sulfate (SAS) precipitation followed by dialysis against PBS
Conjugation:	Unconjugated
Storage:	Store the antibody at 2 - 8 °C up to one month or (in aliquots) at -20 °C for longer. Avoid repeated freezing and thawing.
Stability:	Shelf life: one year from despatch.
Gene Name:	granzyme M
Database Link:	Entrez Gene 3004 Human P51124
Background:	GZMM cleaves peptide substrates after methionine, leucine, and norleucine.
Synonyms:	MET1, Met-ase, HU-Met-1, Met-1 serine protease
Note:	Molecular weight: 27446 Da
Protein Families:	Druggable Genome, Protease, Secreted Protein, Transmembrane



[View online »](#)

Product images:



Western blot analysis of GZMM Antibody (Center) in K562 cell line lysates (35 ug/lane). GZMM (arrow) was detected using the purified Pab.