

## Product datasheet for **AP17448PU-N**

### Granzyme B (GZMB) (C-term) Rabbit Polyclonal Antibody

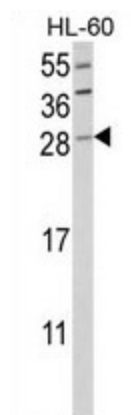
#### Product data:

Product Type:	Primary Antibodies
Applications:	WB
Recommended Dilution:	Western blot: 1:50 - 1:100. ELISA: 1:1,000.
Reactivity:	Human
Host:	Rabbit
Clonality:	Polyclonal
Immunogen:	KLH conjugated synthetic peptide selected from the C-terminal region of human GZMB
Specificity:	This antibody detects Granzyme B (GZMB) at C-term.
Formulation:	PBS with 0.09% (W/V) sodium azide State: Liquid Ig fraction
Concentration:	lot specific
Purification:	Prepared by Saturated Ammonium Sulfate (SAS) precipitation followed by dialysis against PBS
Conjugation:	Unconjugated
Storage:	Store the antibody at 2 - 8 °C up to one month or (in aliquots) at -20 °C for longer. Avoid repeated freezing and thawing.
Stability:	Shelf life: one year from despatch.
Gene Name:	granzyme B
Database Link:	<a href="#">Entrez Gene 3002 Human P10144</a>
Background:	Cytolytic T lymphocytes (CTL) and natural killer (NK) cells share the remarkable ability to recognize, bind, and lyse specific target cells. They are thought to protect their host by lysing cells bearing on their surface 'nonself' antigens, usually peptides or proteins resulting from infection by intracellular pathogens. The protein is crucial for the rapid induction of target cell apoptosis by CTL in cell-mediated immune response.
Synonyms:	Granzyme-2, CGL1, CTSLG1, CSPB, CTLA1, CTLA-1, GRB, SECT, Fragmentin-2
Note:	Molecular weight: 27688 Da



[View online »](#)

## Product images:



Western blot analysis of GZMB Antibody (C-term) in HL-60 cell line lysates (35 ug/lane). GZMB (arrow) was detected using the purified Pab.