

Product datasheet for **AP17441PU-N**

Glutathione Synthetase (GSS) (C-term) Rabbit Polyclonal Antibody

Product data:

Product Type:	Primary Antibodies
Applications:	WB
Recommended Dilution:	Western blot: 1:100 - 1:500. ELISA: 1:1,000.
Reactivity:	Human, Mouse
Host:	Rabbit
Clonality:	Polyclonal
Immunogen:	KLH conjugated synthetic peptide selected from the C-terminal region of human GSS
Specificity:	This antibody detects GSS at C-term.
Formulation:	PBS with 0.09% (W/V) sodium a State: Liquid Ig fraction
Concentration:	lot specific
Purification:	Purified through a protein A column, followed by peptide affinity purificatio
Conjugation:	Unconjugated
Storage:	Store the antibody at 2 - 8 °C up to one month or (in aliquots) at -20 °C for longer. Avoid repeated freezing and thawing.
Stability:	Shelf life: one year from despatch.
Gene Name:	glutathione synthetase
Database Link:	Entrez Gene 14854 Mouse Entrez Gene 2937 Human P48637
Background:	Glutathione is important for a variety of biological functions, including protection of cells from oxidative damage by free radicals, detoxification of xenobiotics, and membrane transport. GSS functions as a homodimer to catalyze the second step of glutathione biosynthesis, which is the ATP-dependent conversion of gamma-L-glutamyl-L-cysteine to glutathione.
Synonyms:	Glutathione synthase, GSH synthetase, GSS
Note:	Molecular weight: 52385 Da

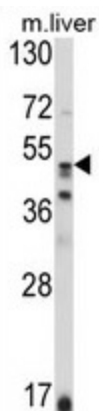


[View online »](#)

Protein Families: Druggable Genome

Protein Pathways: Glutathione metabolism, Metabolic pathways

Product images:



Western blot analysis of GSS Antibody (C-term) in mouse liver tissue lysates (35 ug/lane). GSS (arrow) was detected using the purified Pab.