

Product datasheet for **AP17428PU-N**

Glutamine Synthetase (GLUL) (N-term) Rabbit Polyclonal Antibody

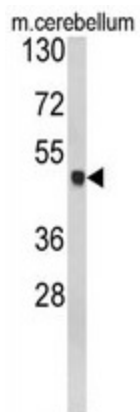
Product data:

Product Type:	Primary Antibodies
Applications:	WB
Recommended Dilution:	Western blot: 1:100 - 1:500.
Reactivity:	Human, Mouse
Host:	Rabbit
Clonality:	Polyclonal
Immunogen:	KLH conjugated synthetic peptide selected from the N-terminal region of human GLUL
Specificity:	This antibody detects GLUL at N-term.
Formulation:	PBS with 0.09% (W/V) sodium azide State: Liquid Ig fraction
Concentration:	lot specific
Purification:	Purified through a protein A column, followed by peptide affinity purification
Conjugation:	Unconjugated
Storage:	Store the antibody at 2 - 8 °C up to one month or (in aliquots) at -20 °C for longer. Avoid repeated freezing and thawing.
Stability:	Shelf life: one year from despatch.
Gene Name:	glutamate-ammonia ligase
Database Link:	Entrez Gene 14645 Mouse Entrez Gene 2752 Human P15104
Background:	GLUL belongs to the glutamine synthetase family. It catalyzes the synthesis of glutamine from glutamate and ammonia. Glutamine is a main source of energy and is involved in cell proliferation, inhibition of apoptosis, and cell signaling.
Synonyms:	GS, GLUL, GLNS, Glutamate decarboxylase
Note:	Molecular weight: 42064 Da
Protein Pathways:	Alanine, aspartate and glutamate metabolism, Arginine and proline metabolism, Metabolic pathways, Nitrogen metabolism



[View online »](#)

Product images:



Western blot analysis of GLUL Antibody (N-term) in mouse cerebellum tissue lysates (35 ug/lane). GLUL (arrow) was detected using the purified Pab.