

Product datasheet for **AP17425PU-N**

GLO1 (N-term) Rabbit Polyclonal Antibody

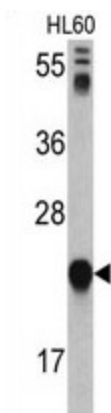
Product data:

Product Type:	Primary Antibodies
Applications:	WB
Recommended Dilution:	Western blot: 1:50 - 1:100. ELISA: 1:1,000.
Reactivity:	Human
Host:	Rabbit
Clonality:	Polyclonal
Immunogen:	KLH conjugated synthetic peptide selected from the N-terminal region of human GLO1
Specificity:	This antibody detects Lactoylglutathione lyase / GLO1 at N-term.
Formulation:	PBS with 0.09% (W/V) sodium azide State: Liquid Ig fraction
Concentration:	lot specific
Purification:	Prepared by Saturated Ammonium Sulfate (SAS) precipitation followed by dialysis against PBS
Conjugation:	Unconjugated
Storage:	Store the antibody at 2 - 8 °C up to one month or (in aliquots) at -20 °C for longer. Avoid repeated freezing and thawing.
Stability:	Shelf life: one year from despatch.
Gene Name:	glyoxalase I
Database Link:	Entrez Gene 2739 Human Q04760
Background:	The enzyme GLO1 is responsible for the catalysis and formation of S-lactoyl-glutathione from methylglyoxal condensation and reduced glutathione. Glyoxalase I is linked to HLA and is localized to 6p21.3-p21.1, between HLA and the centromere.
Synonyms:	Methylglyoxalase, Aldoketomutase, Glx I, Ketone-aldehyde mutase
Note:	Molecular weight: 20778 Da
Protein Pathways:	Pyruvate metabolism



[View online »](#)

Product images:



Western blot analysis of GLO1 antibody (N-term) in HL60 cell line lysates (35 ug/lane). GLO1 (arrow) was detected using the purified Pab.