

Product datasheet for **AP17421PU-N**

GGT5 (N-term) Rabbit Polyclonal Antibody

Product data:

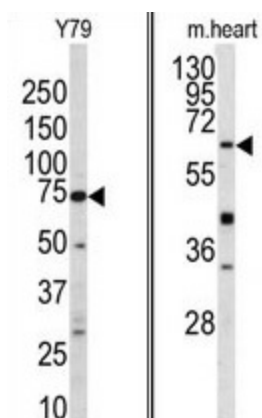
Product Type:	Primary Antibodies
Applications:	WB
Recommended Dilution:	Western blot: 1:50 - 1:100. ELISA: 1:1,000.
Reactivity:	Human, Mouse
Host:	Rabbit
Clonality:	Polyclonal
Immunogen:	KLH conjugated synthetic peptide selected from the N-terminal region of human GGTLA1
Specificity:	This antibody detects GGTLA1 at N-term.
Formulation:	PBS with 0.09% (W/V) sodium azide State: Liquid Ig fraction
Concentration:	lot specific
Purification:	Prepared by Saturated Ammonium Sulfate (SAS) precipitation followed by dialysis against PBS
Conjugation:	Unconjugated
Storage:	Store the antibody at 2 - 8 °C up to one month or (in aliquots) at -20 °C for longer. Avoid repeated freezing and thawing.
Stability:	Shelf life: one year from despatch.
Gene Name:	gamma-glutamyltransferase 5
Database Link:	Entrez Gene 2687 Human P36269
Background:	This gene is a member of gamma-glutamyl transpeptidase enzymes. This enzyme consists of a heavy and a light chain, and is able to hydrolyze the gamma-glutamyl moiety of glutathione. It converts leukotriene C4 to leukotriene D4, however, it doesn't convert synthetic substrates that are commonly used to assay gamma-glutamyl transpeptidase.
Synonyms:	Gamma-glutamyltransferase 5
Note:	Molecular weight: 62261 Da
Protein Families:	Protease, Transmembrane



[View online »](#)

Protein Pathways: Arachidonic acid metabolism, Cyanoamino acid metabolism, Glutathione metabolism, Metabolic pathways, Selenoamino acid metabolism, Taurine and hypotaurine metabolism

Product images:



(LEFT) Western blot analysis of GGTLA1 antibody (N-term) in Y79 cell line lysates (35 ug/lane). GGTLA1 (arrow) was detected using the purified Pab. (RIGHT) Western blot analysis of GGTLA1 antibody (N-term) in mouse heart tissue lysates (35 ug/lane). GGTLA1 (arrow) was detected using the purified Pab.