

## Product datasheet for **AP17418PU-N**

### **GATA2 (C-term) Rabbit Polyclonal Antibody**

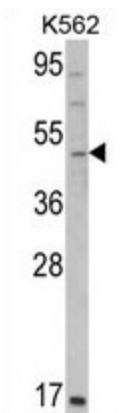
#### **Product data:**

<b>Product Type:</b>	Primary Antibodies
<b>Applications:</b>	WB
<b>Recommended Dilution:</b>	Western blot: 1:50 - 1:100. ELISA: 1:1,000.
<b>Reactivity:</b>	Human
<b>Host:</b>	Rabbit
<b>Clonality:</b>	Polyclonal
<b>Immunogen:</b>	KLH conjugated synthetic peptide selected from the C-terminal region of human GATA2
<b>Specificity:</b>	This antibody detects GATA2 at C-term.
<b>Formulation:</b>	PBS with 0.09% (W/V) sodium azide State: Liquid Ig fraction
<b>Concentration:</b>	lot specific
<b>Purification:</b>	Prepared by Saturated Ammonium Sulfate (SAS) precipitation followed by dialysis against PBS
<b>Conjugation:</b>	Unconjugated
<b>Storage:</b>	Store the antibody at 2 - 8 °C up to one month or (in aliquots) at -20 °C for longer. Avoid repeated freezing and thawing.
<b>Stability:</b>	Shelf life: one year from despatch.
<b>Gene Name:</b>	GATA binding protein 2
<b>Database Link:</b>	<a href="#">Entrez Gene 2624 Human P23769</a>
<b>Background:</b>	GATA2 is a member of the GATA family of zinc-finger transcription factors that are named for the consensus nucleotide sequence they bind in the promoter regions of target genes. This protein plays an essential role in regulating transcription of genes involved in the development and proliferation of hematopoietic and endocrine cell lineages.
<b>Synonyms:</b>	GATA-2, GATA-binding protein 2
<b>Note:</b>	Molecular weight: 50500 Da



[View online »](#)

## Product images:



Western blot analysis of GATA2 Antibody (C-term) in K562 cell line lysates (35 ug/lane). GATA2 (arrow) was detected using the purified Pab.