

Product datasheet for **AP17417PU-N**

Growth Arrest Specific Protein 7 (GAS7) (C-term) Rabbit Polyclonal Antibody

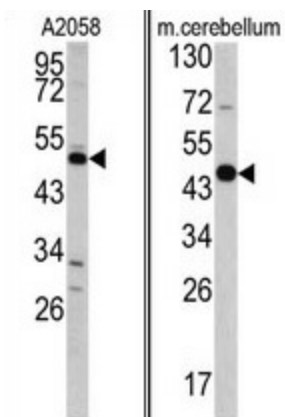
Product data:

Product Type:	Primary Antibodies
Applications:	WB
Recommended Dilution:	Western blot: 1:50 - 1:100. ELISA: 1:1,000.
Reactivity:	Human, Mouse
Host:	Rabbit
Clonality:	Polyclonal
Immunogen:	KLH conjugated synthetic peptide selected from the C-terminal region of human GAS7
Specificity:	This antibody detects GAS7 at C-term.
Formulation:	PBS with 0.09% (W/V) sodium azide State: Liquid Ig fraction
Concentration:	lot specific
Purification:	Prepared by Saturated Ammonium Sulfate (SAS) precipitation followed by dialysis against PBS
Conjugation:	Unconjugated
Storage:	Store the antibody at 2 - 8 °C up to one month or (in aliquots) at -20 °C for longer. Avoid repeated freezing and thawing.
Stability:	Shelf life: one year from despatch.
Gene Name:	growth arrest specific 7
Database Link:	Entrez Gene 14457 Mouse Entrez Gene 8522 Human O60861
Background:	Growth arrest-specific 7 is expressed primarily in terminally differentiated brain cells and predominantly in mature cerebellar Purkinje neurons. GAS7 plays a putative role in neuronal development.
Synonyms:	GAS-7, Growth arrest-specific protein 7, KIAA0394
Note:	Molecular weight: 54371 Da
Protein Families:	Transcription Factors



[View online »](#)

Product images:



(LEFT) Western blot analysis of GAS7 antibody (C-term) in A2058 cell line lysates (35 ug/lane). GAS7 (arrow) was detected using the purified Pab.
(RIGHT) Western blot analysis of GAS7 antibody (C-term) in mouse cerebellum tissue lysates (35 ug/lane). GAS7 (arrow) was detected using the purified Pab.