

Product datasheet for **AP17412PU-N**

GALT (C-term) Rabbit Polyclonal Antibody

Product data:

Product Type:	Primary Antibodies
Applications:	WB
Recommended Dilution:	Western blot: 1:100 - 1:500. ELISA: 1:1,000.
Reactivity:	Human
Host:	Rabbit
Clonality:	Polyclonal
Immunogen:	KLH conjugated synthetic peptide selected from the C-terminal region of human GALT
Specificity:	This antibody detects GALT at C-term.
Formulation:	PBS with 0.09% (W/V) sodium azide State: Liquid Ig fraction
Concentration:	lot specific
Purification:	Purified through a protein A column, followed by peptide affinity purification
Conjugation:	Unconjugated
Storage:	Store the antibody at 2 - 8 °C up to one month or (in aliquots) at -20 °C for longer. Avoid repeated freezing and thawing.
Stability:	Shelf life: one year from despatch.
Gene Name:	galactose-1-phosphate uridylyltransferase
Database Link:	Entrez Gene 2592 Human P07902
Background:	Galactose-1-phosphate uridyl transferase (GALT) catalyzes the second step of the Leloir pathway of galactose metabolism, namely the conversion of UDP-glucose + galactose-1-phosphate to glucose-1-phosphate + UDP-galactose. The absence of this enzyme results in classic galactosemia in humans and can be fatal in the newborn period if lactose is not removed from the diet.
Synonyms:	Gal-1-P uridylyltransferase
Note:	Molecular weight: 43363 Da

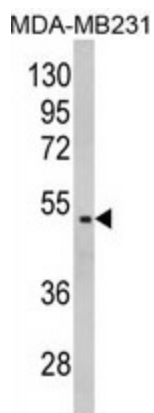


[View online »](#)

Protein Families: Druggable Genome

Protein Pathways: Amino sugar and nucleotide sugar metabolism, Galactose metabolism, Metabolic pathways

Product images:



Western blot analysis of GALT Antibody (C-term) in MDA-MB231 cell line lysates (35 ug/lane). GALT (arrow) was detected using the purified Pab.