

## Product datasheet for **AP17409PU-N**

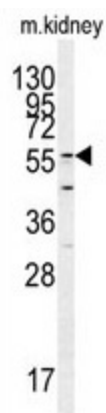
### **GADL1 (C-term) Rabbit Polyclonal Antibody**

#### **Product data:**

Product Type:	Primary Antibodies
Applications:	WB
Recommended Dilution:	Western blot: 1:50 - 1:100. ELISA: 1:1,000.
Reactivity:	Human, Mouse
Host:	Rabbit
Clonality:	Polyclonal
Immunogen:	KLH conjugated synthetic peptide selected from the C-terminal region of human GADL1
Specificity:	This antibody detects GADL1 at C-term.
Formulation:	PBS with 0.09% (W/V) sodium azide State: Liquid Ig fraction
Concentration:	lot specific
Purification:	Prepared by Saturated Ammonium Sulfate (SAS) precipitation followed by dialysis against PBS
Conjugation:	Unconjugated
Storage:	Store the antibody at 2 - 8 °C up to one month or (in aliquots) at -20 °C for longer. Avoid repeated freezing and thawing.
Stability:	Shelf life: one year from despatch.
Database Link:	<a href="#">Entrez Gene 339896 Human Q6ZQY3</a>
Background:	GADL1 belongs to the group II decarboxylase family.
Synonyms:	Glutamate decarboxylase-like protein 1
Note:	Molecular weight: 59247 Da



[View online »](#)

**Product images:**


Western blot analysis of GADL1 antibody (C-term) in mouse kidney tissue lysates (35 ug/lane). GADL1 (arrow) was detected using the purified Pab.