

## Product datasheet for **AP17405PU-N**

### FUCA1 Rabbit Polyclonal Antibody

#### Product data:

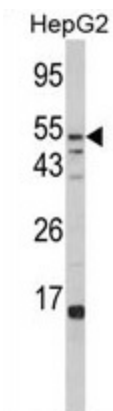
Product Type:	Primary Antibodies
Applications:	WB
Recommended Dilution:	Western blot: 1:50 - 1:100. ELISA: 1:1,000.
Reactivity:	Human
Host:	Rabbit
Clonality:	Polyclonal
Immunogen:	KLH conjugated synthetic peptide selected from the Center region of human FUCA1
Specificity:	This antibody detects FUCA1 at Center.
Formulation:	PBS with 0.31% (W/V) sodium azide State: Liquid Ig fraction
Concentration:	lot specific
Purification:	Prepared by Saturated Ammonium Sulfate (SAS) precipitation followed by dialysis against PBS
Conjugation:	Unconjugated
Storage:	Store the antibody at 2 - 8 °C up to one month or (in aliquots) at -20 °C for longer. Avoid repeated freezing and thawing.
Stability:	Shelf life: one year from despatch.
Gene Name:	fucosidase, alpha-L- 1, tissue
Database Link:	<a href="#">Entrez Gene 2517 Human P04066</a>
Background:	FUCA1 is a lysosomal enzyme involved in the degradation of fucose-containing glycoproteins and glycolipids. Mutations in this gene are associated with fucosidosis (FUCA1D), which is an autosomal recessive lysosomal storage disease. A pseudogene of this locus is present on chr 2.
Synonyms:	Nbla10230
Note:	Molecular weight: 53689 Da
Protein Families:	Druggable Genome



[View online »](#)

Protein Pathways: Lysosome, Other glycan degradation

### Product images:



Western blot analysis of FUCA1 Antibody (Center) in HepG2 cell line lysates (35 ug/lane). FUCA1 (arrow) was detected using the purified Pab.