

Product datasheet for **AP17403PU-N**

Ferritin Heavy Chain (FTH1) (C-term) Rabbit Polyclonal Antibody

Product data:

Product Type:	Primary Antibodies
Applications:	WB
Recommended Dilution:	Western blot: 1:100 - 1:500. ELISA: 1:1,000.
Reactivity:	Human
Host:	Rabbit
Clonality:	Polyclonal
Immunogen:	KLH conjugated synthetic peptide selected from the C-terminal region of human FTH1
Specificity:	This antibody detects Ferritin heavy chain (FTH1) at C-term.
Formulation:	PBS with 0.09% (W/V) sodium azide State: Liquid Ig fraction
Concentration:	lot specific
Purification:	Purified through a protein A column, followed by peptide affinity purification
Conjugation:	Unconjugated
Storage:	Store the antibody at 2 - 8 °C up to one month or (in aliquots) at -20 °C for longer. Avoid repeated freezing and thawing.
Stability:	Shelf life: one year from despatch.
Gene Name:	ferritin heavy chain 1
Database Link:	Entrez Gene 2495 Human P02794
Background:	FTH1 is the heavy subunit of ferritin, the major intracellular iron storage protein in prokaryotes and eukaryotes. It is composed of 24 subunits of the heavy and light ferritin chains. Variation in ferritin subunit composition may affect the rates of iron uptake and release in different tissues. A major function of ferritin is the storage of iron in a soluble and nontoxic state. Defects in ferritin proteins are associated with several neurodegenerative diseases.
Synonyms:	FTH-1, FTH, FTHL6, Ferritin H subunit, EC=1.16.3.1, Cell proliferation-inducing gene 15 protein
Note:	Molecular weight: 21226 Da

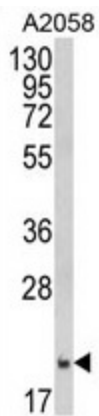


[View online »](#)

Protein Families: Druggable Genome

Protein Pathways: Porphyrin and chlorophyll metabolism

Product images:



Western blot analysis of FTH1 Antibody (C-term) in A2058 cell line lysates (35 ug/lane). FTH1 (arrow) was detected using the purified Pab.