

Product datasheet for **AP17399PU-N**

Folypolyglutamate synthase (FPGS) Rabbit Polyclonal Antibody

Product data:

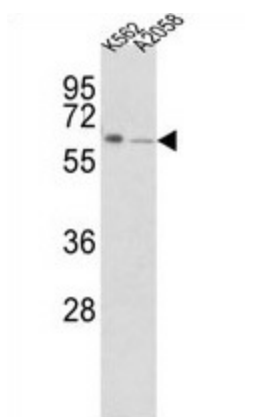
Product Type:	Primary Antibodies
Applications:	WB
Recommended Dilution:	Western blot: 1:100 - 1:500. ELISA: 1:1,000.
Reactivity:	Human
Host:	Rabbit
Clonality:	Polyclonal
Immunogen:	KLH conjugated synthetic peptide selected from the Center region of human FPGS
Specificity:	This antibody detects FPGS at Center.
Formulation:	PBS with 0.09% (W/V) sodium azide State: Liquid Ig fraction
Concentration:	lot specific
Purification:	Purified through a protein A column, followed by peptide affinity purification
Conjugation:	Unconjugated
Storage:	Store the antibody at 2 - 8 °C up to one month or (in aliquots) at -20 °C for longer. Avoid repeated freezing and thawing.
Stability:	Shelf life: one year from despatch.
Gene Name:	folypolyglutamate synthase
Database Link:	Entrez Gene 2356 Human Q05932
Background:	FPGS is the folypolyglutamate synthetase enzyme. This enzyme has a central role in establishing and maintaining both cytosolic and mitochondrial folypolyglutamate concentrations and, therefore, is essential for folate homeostasis and the survival of proliferating cells. This enzyme catalyzes the ATP-dependent addition of glutamate moieties to folate and folate derivatives.
Synonyms:	Folypolyglutamate synthase, Tetrahydrofolate synthase
Note:	Molecular weight: 64609 Da



[View online »](#)

Protein Pathways: Folate biosynthesis, Metabolic pathways

Product images:



Western blot analysis of FPGS Antibody (Center) in K562, A2058 cell line lysates (35 ug/lane). FPGS (arrow) was detected using the purified Pab.