

## Product datasheet for **AP17390PU-N**

### FLI1 Rabbit Polyclonal Antibody

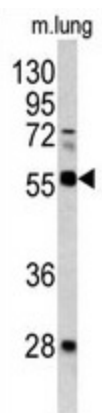
#### Product data:

Product Type:	Primary Antibodies
Applications:	WB
Recommended Dilution:	Western blot: 1:50 - 1:100. ELISA: 1:1,000.
Reactivity:	Human, Mouse
Host:	Rabbit
Clonality:	Polyclonal
Immunogen:	KLH conjugated synthetic peptide selected from the Center region of human FLI1
Specificity:	This antibody detects FLI1 at Center.
Formulation:	PBS with 0.09% (W/V) sodium azide State: Liquid Ig fraction
Concentration:	lot specific
Purification:	Prepared by Saturated Ammonium Sulfate (SAS) precipitation followed by dialysis against PBS
Conjugation:	Unconjugated
Storage:	Store the antibody at 2 - 8 °C up to one month or (in aliquots) at -20 °C for longer. Avoid repeated freezing and thawing.
Stability:	Shelf life: one year from despatch.
Gene Name:	Fli-1 proto-oncogene, ETS transcription factor
Database Link:	<a href="#">Entrez Gene 14247 Mouse</a> <a href="#">Entrez Gene 2313 Human</a> <a href="#">Q01543</a>
Background:	FLI1 is a sequence-specific transcriptional activator. It recognizes the DNA sequence 5'-C[CA]GGAAGT-3'.
Synonyms:	Fli-1 proto-oncogene, ERGB transcription factor, vascular tumor marker
Note:	Molecular weight: 50982 Da
Protein Families:	Transcription Factors



[View online »](#)

## Product images:



Western blot analysis of FLI1 antibody (Center) in mouse lung tissue lysates (35 ug/lane). FLI1 (arrow) was detected using the purified Pab.