

Product datasheet for **AP17388PU-N**

FKBP9 (N-term) Rabbit Polyclonal Antibody

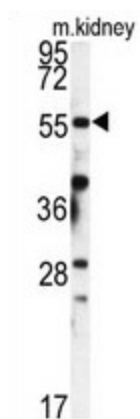
Product data:

Product Type:	Primary Antibodies
Applications:	WB
Recommended Dilution:	Western blot: 1:50 - 1:100. ELISA: 1:1,000.
Reactivity:	Human, Mouse
Host:	Rabbit
Clonality:	Polyclonal
Immunogen:	KLH conjugated synthetic peptide selected from the N-terminal region of human FKBP9
Specificity:	This antibody detects FKBP9 at N-term.
Formulation:	PBS with 0.09% (W/V) sodium azide State: Liquid Ig fraction
Concentration:	lot specific
Purification:	Prepared by Saturated Ammonium Sulfate (SAS) precipitation followed by dialysis against PBS
Conjugation:	Unconjugated
Storage:	Store the antibody at 2 - 8 °C up to one month or (in aliquots) at -20 °C for longer. Avoid repeated freezing and thawing.
Stability:	Shelf life: one year from despatch.
Gene Name:	FK506 binding protein 9
Database Link:	Entrez Gene 27055 Mouse Entrez Gene 11328 Human O95302
Background:	FKBP9 is a PPIase which accelerate the folding of proteins during protein synthesis.
Synonyms:	FK506-binding protein 9, FKBP63
Note:	Molecular weight: 63084 Da
Protein Families:	Druggable Genome



[View online »](#)

Product images:



Western blot analysis of FKBP9 antibody (N-term) in mouse kidney tissue lysates (35 ug/lane). FKBP9 (arrow) was detected using the purified Pab.