

## Product datasheet for **AP17383PU-N**

### FKBP2 (N-term) Rabbit Polyclonal Antibody

#### Product data:

Product Type:	Primary Antibodies
Applications:	FC, IHC, WB
Recommended Dilution:	Western blot: 1/50 - 1/100. ELISA: 1/1,000. Immunohistochemistry on paraffin sections: 1/50 - 1/100. Flow Cytometry: 1/10 - 1/50.
Reactivity:	Human, Mouse
Host:	Rabbit
Clonality:	Polyclonal
Immunogen:	KLH conjugated synthetic peptide between 19~48 amino acids from the N-terminal region of human FKBP2
Specificity:	This antibody detects FKBP2 / FKBP13 at N-term.
Formulation:	PBS containing 0.09% (W/V) sodium azide as preservative State: Liquid purified Ig fraction
Concentration:	lot specific
Purification:	Saturated Ammonium Sulfate (SAS) precipitation followed by dialysis against PBS
Conjugation:	Unconjugated
Storage:	Store the antibody at 2 - 8 °C up to one month or (in aliquots) at -20 °C for longer. Avoid repeated freezing and thawing.
Stability:	Shelf life: one year from despatch.
Gene Name:	FK506 binding protein 2
Database Link:	<a href="#">Entrez Gene 14227 Mouse</a> <a href="#">Entrez Gene 2286 Human</a> <a href="#">P26885</a>
Background:	FKBP2 is a member of the immunophilin protein family, which play a role in immunoregulation and basic cellular processes involving protein folding and trafficking. This protein is a cis-trans prolyl isomerase that binds the immunosuppressants FK506 and rapamycin. It is thought to function as an ER chaperone and may also act as a component of membrane cytoskeletal scaffolds.



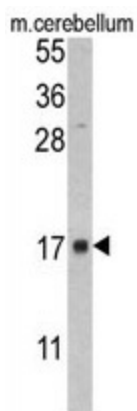
[View online »](#)

**Synonyms:** FKBP-2, FKBP-13

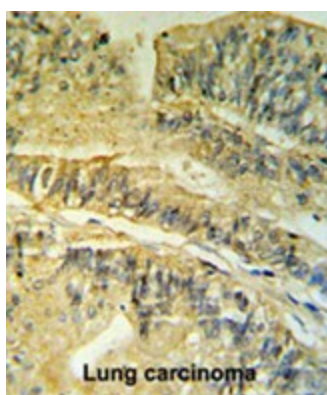
**Note:** Molecular weight: 15649 Da

**Protein Families:** Druggable Genome

**Product images:**

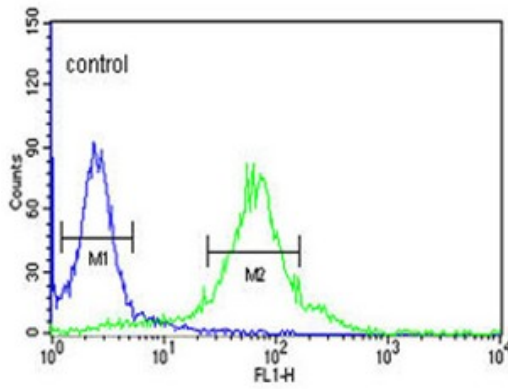


Western blot analysis of FKBP2 antibody (N-term) in mouse cerebellum tissue lysates (35 ug/lane). FKBP2 (arrow) was detected using the purified Pab.



FKBP2 Antibody (N-term) IHC analysis in formalin fixed and paraffin embedded human Colon carcinoma followed by peroxidase conjugation of the secondary antibody and DAB staining. This data demonstrates the use of the FKBP2 Antibody (N-term) for immunohistochemistry. Clinical relevance has not been evaluated.

## Hela



FKBP2 Antibody (N-term) flow cytometric analysis of HeLa cells (right histogram) compared to a negative control cell (left histogram). FITC-conjugated goat-anti-rabbit secondary antibodies were used for the analysis.