

Product datasheet for **AP17382PU-N**

FKBP1B (N-term) Rabbit Polyclonal Antibody

Product data:

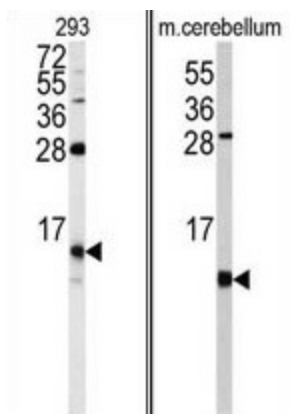
Product Type:	Primary Antibodies
Applications:	WB
Recommended Dilution:	Western blot: 1:50 - 1:100. ELISA: 1:1,000.
Reactivity:	Human, Mouse
Host:	Rabbit
Clonality:	Polyclonal
Immunogen:	KLH conjugated synthetic peptide selected from the N-terminal region of human FKBP1B
Specificity:	This antibody detects FKBP1B at N-term.
Formulation:	PBS with 0.09% (W/V) sodium azide State: Liquid Ig fraction
Concentration:	lot specific
Purification:	Prepared by Saturated Ammonium Sulfate (SAS) precipitation followed by dialysis against PBS
Conjugation:	Unconjugated
Storage:	Store the antibody at 2 - 8 °C up to one month or (in aliquots) at -20 °C for longer. Avoid repeated freezing and thawing.
Stability:	Shelf life: one year from despatch.
Gene Name:	FK506 binding protein 1B
Database Link:	Entrez Gene 2281 Human P68106
Background:	FKBP1B is a member of the immunophilin protein family, which play a role in immunoregulation and basic cellular processes involving protein folding and trafficking. This protein is a cis-trans prolyl isomerase that binds the immunosuppressants FK506 and rapamycin. The protein is highly similar to the FK506-binding protein 1A. Its physiological role is thought to be in excitation-contraction coupling in cardiac muscle.
Synonyms:	FKBP12.6, FKBP1L, OTK4, PPIase FKBP1B, FK506-binding protein 1B, Rotamase, Immunophilin FKBP12.6, h-FKBP-12
Note:	Molecular weight: 11783 Da



[View online »](#)

Protein Families: Druggable Genome

Product images:



(LEFT) Western blot analysis of FKBP1B antibody (N-term) in 293 cell line lysates (35 ug/lane). FKBP1B (arrow) was detected using the purified Pab. (RIGHT) Western blot analysis of FKBP1B antibody (N-term) in mouse cerebellum tissue lysates (35 ug/lane). FKBP1B (arrow) was detected using the purified Pab.