

Product datasheet for **AP17378PU-N**

FKBP11 (N-term) Rabbit Polyclonal Antibody

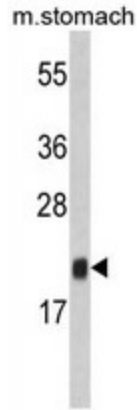
Product data:

Product Type:	Primary Antibodies
Applications:	WB
Recommended Dilution:	Western blot: 1:50 - 1:100. ELISA: 1:1,000.
Reactivity:	Human, Mouse
Host:	Rabbit
Clonality:	Polyclonal
Immunogen:	KLH conjugated synthetic peptide selected from the N-terminal region of human FKBP11
Specificity:	This antibody detects FKBP11 at N-term.
Formulation:	PBS with 0.30% (W/V) sodium azide State: Liquid Ig fraction
Concentration:	lot specific
Purification:	Prepared by Saturated Ammonium Sulfate (SAS) precipitation followed by dialysis against PBS
Conjugation:	Unconjugated
Storage:	Store the antibody at 2 - 8 °C up to one month or (in aliquots) at -20 °C for longer. Avoid repeated freezing and thawing.
Stability:	Shelf life: one year from despatch.
Gene Name:	FK506 binding protein 11
Database Link:	Entrez Gene 66120 Mouse Entrez Gene 51303 Human Q9NYL4
Background:	FKBP11 belongs to the FKBP family of peptidyl-prolyl cis/trans isomerases, which catalyze the folding of proline-containing polypeptides. The peptidyl-prolyl isomerase activity of FKBP proteins is inhibited by the immunosuppressant compounds FK506 and rapamycin.
Synonyms:	FK506-binding protein 11, PPlase FKBP11, Rotamase
Note:	Molecular weight: 22180 Da
Protein Families:	Druggable Genome, Transmembrane

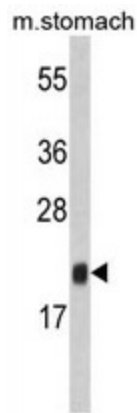


[View online »](#)

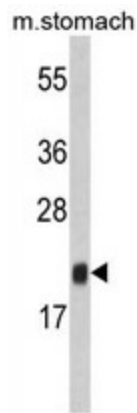
Product images:



Western blot analysis of FKBP11 Antibody (N-term) in mouse stomach tissue lysates (35 ug/lane). FKBP11 (arrow) was detected using the purified Pab.



Western blot analysis of FKBP11 Antibody (N-term) in mouse stomach tissue lysates (35 ug/lane). FKBP11 (arrow) was detected using the purified Pab.



Western blot analysis of FKBP11 Antibody (N-term) in mouse stomach tissue lysates (35 ug/lane). FKBP11 (arrow) was detected using the purified Pab.