

Product datasheet for **AP17377PU-N**

FKBP10 (N-term) Rabbit Polyclonal Antibody

Product data:

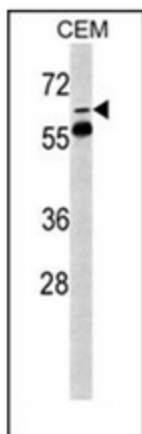
Product Type:	Primary Antibodies
Applications:	FC, IHC, WB
Recommended Dilution:	ELISA: 1/1000. Western Blot: 1/100-1/500. Flow Cytometry: 1/10-1/50. Immunohistochemistry on Paraffin Sections: 1/50-1/100.
Reactivity:	Human, Mouse
Host:	Rabbit
Clonality:	Polyclonal
Immunogen:	KLH conjugated synthetic peptide between 65~94 amino acids from the N-terminal region of human FKBP10.
Specificity:	This antibody detects Human and Mouse FKBP10 at N-term.
Formulation:	PBS containing 0.09% (W/V) Sodium Azide as preservative State: Liquid purified Ig fraction
Concentration:	lot specific
Purification:	Protein A column, followed by peptide affinity purification
Conjugation:	Unconjugated
Storage:	Store undiluted at 2-8°C for one month or (in aliquots) at -20°C for longer. Avoid repeated freezing and thawing.
Stability:	Shelf life: one year from despatch.
Predicted Protein Size:	64245 Da
Gene Name:	FK506 binding protein 10
Database Link:	Entrez Gene 60681 Human Q96AY3
Background:	The protein belongs to the FKBP-type peptidyl-prolyl cis/trans isomerase family. It is located in endoplasmic reticulum and acts as molecular chaperones.
Synonyms:	FK506-binding protein 10, Immunophilin FKBP65, PPIase FKBP10, Rotamase



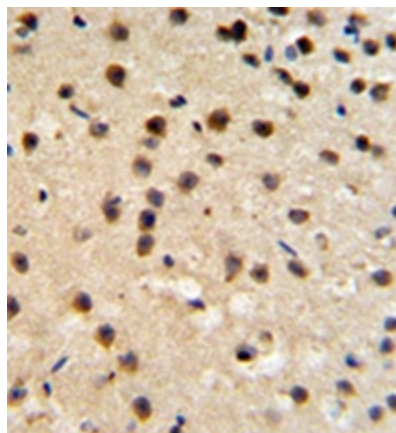
[View online »](#)

Protein Families: Druggable Genome

Product images:



Western blot analysis of FKBP10 Antibody (N-term) in CEM cell line lysates (35ug/lane). FKBP10 (arrow) was detected using the purified Pab.



Immunohistochemistry analysis in formalin fixed and paraffin embedded mouse brain tissue reacted with FKBP10 Antibody (N-term), which was peroxidase conjugated to the secondary antibody and followed by DAB staining. This data demonstrates the use of the FKBP10 Antibody (N-term) for immunohistochemistry. Clinical relevance has not been evaluated.